

Torsion Pendulum

Life swings like a pendulum backward and forward between pain and boredom.

Arthur Schopenhauer

1 Introduction

Oscillations show up throughout physics. From simple spring systems in mechanics to atomic bonds in quantum physics to bridges blowing the wind, physical systems often act like oscillators when they are displaced from stable equilibria.

In this experiment you will observe the behavior of a simple sort of oscillator: the torsion pendulum. In general a torsion pendulum is an object that has oscillations which are due to rotations about some axis through the object. This apparatus allows for exploring both damped oscillations and forced oscillations.

2 Theory

Note that angular frequency (ω in rad/s) and frequency (f in Hz.) are not the same. Most the equations below concern ω , in many cases it is easier to measure f .

In the damped case, the torque balance for the torsion pendulum yields the differential equation:

$$J \frac{d^2\theta}{dt^2} + b \frac{d\theta}{dt} + c\theta = 0 \quad (1)$$

where J is the moment of inertia of the pendulum, b is the damping coefficient, c is the restoring torque constant, and θ is the angle of rotation [?]. This equation can be rewritten in the standard form [?]:

$$\ddot{\theta} + 2\beta\dot{\theta} + \omega_0^2\theta = 0, \quad (2)$$

where the damping constant is $\beta = \frac{b}{2J}$ and the natural frequency is $\omega_0 = \sqrt{\frac{c}{J}}$. The general solution to this differential equations is:

$$\theta(t) = e^{-\beta t} \left[A_1 e^{\sqrt{\beta^2 - \omega_0^2} t} + A_2 e^{-\sqrt{\beta^2 - \omega_0^2} t} \right], \quad (3)$$

with three different types of solutions possible depending on the relationships between ω_0 and β .

In the underdamped case ($\beta < \omega_0$):

$$\theta(t) = \theta_0 e^{-\beta t} \cos(\omega_1 t - \gamma) \quad (4)$$

with the oscillation frequency $\omega_1 = \sqrt{\omega_0^2 - \beta^2}$, initial amplitude θ_0 , and phase γ .

In the critically damped case ($\beta = \omega_0$):

$$\theta(t) = (A + Bt)e^{-\beta t}. \quad (5)$$

In the overdamped case ($\beta > \omega_0$):

$$\theta(t) = e^{-\beta t} [A_1 e^{\omega_2 t} + A_2 e^{-\omega_2 t}], \quad (6)$$

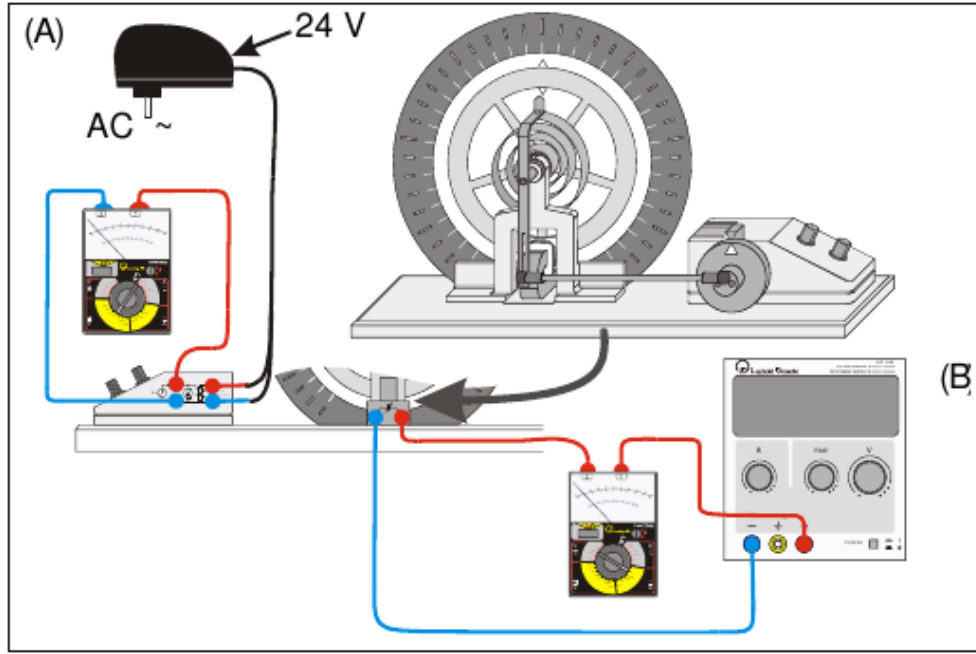


Figure 1: A schematic of the torsion pendulum apparatus [?].

where $\omega_2 = \sqrt{\beta^2 - \omega_0^2}$.

For the forced oscillation case, an external torque is added to Equation 1:

$$J \frac{d^2\theta}{dt^2} + b \frac{d\theta}{dt} + c\theta = \tau_0 \sin(\omega t), \quad (7)$$

where ω is the driving frequency and τ_0 is the driving torque [?]. The general solution to the differential equation is the sum of the homogeneous solutions (which are the solutions to the damped case above) plus a particular solution. The particular solution has the form:

$$\theta(t) = \theta_m(\omega) \sin(\omega t - \phi) \quad (8)$$

with

$$\theta_m(\omega) = \frac{\tau_0}{J \sqrt{(\omega_0^2 - \omega^2)^2 + (b\omega/J)^2}} \quad (9)$$

In this case the resonance frequency is $\omega_r = \sqrt{\omega_0^2 + 2\beta^2}$ and the phase shift between the pendulum and the external oscillator is:

$$\tan \phi = \frac{2\beta\omega}{\omega_0^2 - \omega^2} \quad (10)$$

3 Equipment

In this experiment you will use the torsion pendulum, the power supply for the driving motor, a low voltage power supply for the eddy current damper, two digital multimeters, and a stop watch.

Figure 1 shows the torsion pendulum and associated electronics. The motor which is used to force the pendulum (which will only be used in the second half of the experiment) is shown on the left of the diagram. The eddy current damping device is shown on the bottom of the diagram.

3.1 Notes on the Torsion Pendulum

- Do not forget to consider uncertainties in your measurements and calculations.
- Do not allow the current through the eddy current damper to exceed 2 A.
- Do not leave the current above 1 A for very long.
- The units on for the angle on the pendulum are not standard. Make up a name for the units and stick with it.
- Take the moment of inertia, J , of the torsion pendulum to be $3.0 \pm 0.1 \text{ kg} \cdot \text{m}^2$.

4 Data collection

The instructions below assume that you will collect data by eye, but you can also use video capture to collect the data. The torsion pendulum data can also be taken by video capture, either using the camera attached to the Raspberry Pi in PE 132, or with your own cell phone. Then the files can be analyzed using Tracker (<https://www.cabrillo.edu/~dbrown/tracker/>).

4.1 Video collection with Raspberry Pi camera

Set up the pendulum with a white background behind it, and light it well. Log into the Raspberry Pi, and run the video capture software using a command like the one below:

```
raspivid -w 640 -h 480 -fps 5 -t 10000 -o pend_jc1.h264
```

The command is `raspivid`, the `-w` and `-h` options set the width and height of the video, the `-fps` sets the frame rate in frame per second, `-t` sets the length of the video in microseconds, and `-o` sets the name of the output h264 video file.

After creating the video files, you can transfer them to the Linux computer yalow, by copying them to `/var/yalow`. Once copied there, they will show up on yalow under `/backup`. From there, you will need to change the files into mp4 format, so that Tracker can use them:

```
avconv -i pend_jc1.h264 -c copy -r 5 pend_jc1.mp4
```

This command changes the h264 file into an mp4 file, which tracker can deal with. The command `avconv` can do fancier things like change the frame rate or size of the image as well. (A similar command called `ffmpeg` is available on the regular Linux computers.)

Tracker

Tracker is currently just installed on yalow. To run it log into yalow from the console, or remotely using ssh:

```
ssh -Y physics@yalow
```

Then either find Tracker in the menu, or from a terminal type:

```
/opt/tracker/tracker.sh
```

To use Tracker, you can use the fine documentation under Help, particularly Getting Started. Here's an even briefer overview:

1. Open your `.mp4` video file - other types may work, but not h264.
2. Set the origin. Click on the tool that looks like axes and drag the axes to the center of that axis of pendulum.
3. Click Create —Point mass - to pick the tool to follow the pendulum pointer.
4. Shift-click on point on pendulum pointer. Each Shift click advances one frame. These clicks digitize the location of the pendulum pointer. The data shows up on the plot.

5. You can display other quantities on your data table by clicking Table and choosing the quantities.
6. You should save your data as a Tracker (.trk) file.
7. Also, save your data as a .txt file for use elsewhere - File—Export—date file .

5 Procedure

5.1 Damped Oscillations

First, setup the torsion pendulum apparatus, with the forcing motor turned off and play with it to get an idea of how it works [?].

5.1.1 Nearly Free Motion

With damping magnet turned off, find the natural frequency by measuring the period of the torsion pendulum. You will probably get better results if you use the time it takes the pendulum to oscillate 10 or 20 times to find the period. Note that even with the current off, friction does cause some damping of the pendulum. So the motion is not quite simple harmonic motion.

5.1.2 Damping Constant

Pick a small value of the damping current ($0.1 \text{ A} < I < 0.3 \text{ A}$) and determine the damping constant. To do this first measure the period several times. Then start the pendulum from its furthest rotation point and measure θ_{max} after each period. If you have difficulty taking the θ_{max} measurements, you may need to try again. If using video capture, you can just take one long video at a given damping current, and collect all of the needed information from that video.

Plot ϕ_{max} versus time. Your plot should look like a decreasing exponential. Fit your data to find a value for the damping constant, β .

Repeat this process for a higher value of the damping current ($0.3 \text{ A} < I < 0.6 \text{ A}$).

5.1.3 Nearly Critically and Critically Damped

Increase the damping current until the system only completes one oscillation after you let it go from its furthest rotation point, so the pendulum only crosses 0 once and then approaches 0 from the negative side. Find the oscillation time for this case by taking several measurements and taking the average.

Then increase the current until the pendulum approaches 0 from the positive side, but never crosses 0. This is the critically damped case. Use several measurements for the time it takes the pendulum to reach the equilibrium in this case.

Now use the critically damped case to get an estimate of the damping constant, β , in this case. Find the damping constant from equation 5 by measuring the time that it takes the pendulum to reach some fixed θ , say $\theta_0/10$, after releasing it from its furthest rotation point. Note that in this case you can assume $B = 0$ and that $A = \theta(t = 0)$ in equation 5. Since $\omega_0 = \beta$ in the critically damped case, you can use this β to get estimates of the damping coefficient, b , and the restoring torque, c . Recall that $J = 3.0 \pm 0.1 \text{ kg} \cdot \text{m}^2$.

Now put the current at a higher value (but remember to keep it under 2.0 A). This is an overdamped case. Find the oscillation time in this case.

5.2 Forced Oscillations

First, setup the torsion pendulum apparatus with the forcing motor turned on and play with it to get an idea of how it works [?]. Note that you may have to give the pendulum an initial displacement to get it moving, but that initial motion will damp out, leaving only the forced oscillations.

5.2.1 Resonance Curve

Find the resonance frequency of the torsion pendulum from a amplitude (θ_{max}) versus driving frequency plot for the torsion pendulum. In this section, you will need to decide on a procedure yourself, based on what you know about the device and resonance curves. While you are doing taking data, be sure to note the phase behavior of the driver and the oscillator before, at, and past resonance. You should find resonance curves and frequencies for three different brake (damping) currents (~ 0 A, ~ 0.4 A, and 0.8 A). Also, find the damping constant for those three cases.

Note that WAPP has a new option to fit resonance curves. You should attempt to use it, but be skeptical about its results. Your plots must have a fairly well-defined shape near the peak in order for WAPP to give good results. If WAPP gives suspect results, calculate the resonance frequency by eye from your resonance curve.

6 Conclusions

1. Comment on how well the WAPP resonance curve mode works.
2. Are the damping constants in Section 5.1.2 consistent with what you would expect? If not, attempt to explain why not.
3. How do the three average oscillation times found in Section 5.1.3 compare? What does this tell you about the critically damped case?
4. In Section 5.2.1, how did the phase difference between driver and the oscillator vary with frequency? What was the phase at low frequency? At high frequency? Near resonance?
5. Considering the damping currents used, are the damping constants found in Sections 5.1.3, 5.1.2 and 5.2.1, consistent with each other? If not, attempt to explain why not.