

# Torsion Pendulum

Now if this electron is displaced from its equilibrium position, a force that is directly proportional to the displacement restores it like a pendulum to its position of rest.

Pieter Zeeman

## 1 Introduction

Oscillations show up throughout physics. From simple spring systems in mechanics to atomic bonds in quantum physics to bridges blowing the wind, physical systems often act like oscillators when they are displaced from stable equilibria.

In this experiment you will observe the behavior of a simple sort of oscillator: the torsion pendulum. In general a torsion pendulum is an object that has oscillations which are due to rotations about some axis through the object. This apparatus allows for exploring both damped oscillations and forced oscillations.

## 2 Theory

Note that angular frequency ( $\omega$  in rad/s) and frequency ( $f$  in Hz.) are not the same. Most the equations below concern  $\omega$ , in many cases it is easier to measure  $f$ .

In the damped case, the torque balance for the torsion pendulum yields the differential equation:

$$J \frac{d^2\theta}{dt^2} + b \frac{d\theta}{dt} + c\theta = 0 \quad (1)$$

where  $J$  is the moment of inertia of the pendulum,  $b$  is the damping coefficient,  $c$  is the restoring torque constant, and  $\theta$  is the angle of rotation [*Leybold Scientific*, 2006a]. This equation can be rewritten in the standard form [*Thornton and Marion*, 2004]:

$$\ddot{\theta} + 2\beta\dot{\theta} + \omega_0^2\theta = 0, \quad (2)$$

where the damping constant is  $\beta = \frac{b}{2J}$  and the natural frequency is  $\omega_0 = \sqrt{\frac{c}{J}}$ . The general solution to this differential equations is:

$$\theta(t) = e^{-\beta t} \left[ A_1 e^{\sqrt{\beta^2 - \omega_0^2} t} + A_2 e^{-\sqrt{\beta^2 - \omega_0^2} t} \right], \quad (3)$$

with three different types of solutions possible depending on the relationships between  $\omega_0$  and  $\beta$ .

In the underdamped case ( $\beta < \omega_0$ ):

$$\theta(t) = \theta_0 e^{-\beta t} \cos(\omega_1 t - \gamma) \quad (4)$$

with the oscillation frequency  $\omega_1 = \sqrt{\omega_0^2 - \beta^2}$ , initial amplitude  $\theta_0$ , and phase  $\gamma$ .

In the critically damped case ( $\beta = \omega_0$ ):

$$\theta(t) = (A + Bt)e^{-\beta t}. \quad (5)$$

In the overdamped case ( $\beta > \omega_0$ ):

$$\theta(t) = e^{-\beta t}[A_1 e^{\omega_2 t} + A_2 e^{-\omega_2 t}], \quad (6)$$

where  $\omega_2 = \sqrt{\beta^2 - \omega_0^2}$ .

For the forced oscillation case, an external torque is added to Equation 1:

$$J \frac{d^2 \theta}{dt^2} + b \frac{d\theta}{dt} + c\theta = \tau_0 \sin(\omega t), \quad (7)$$

where  $\omega$  is the driving frequency and  $\tau_0$  is the driving torque [*Leybold Scientific*, 2006b]. The general solution to the differential equation is the sum of the homogeneous solutions (which are the solutions to the damped case above) plus a particular solution. The particular solution has the form:

$$\theta(t) = \theta_m(\omega) \sin(\omega t - \phi) \quad (8)$$

with

$$\theta_m(\omega) = \frac{\tau_0}{J \sqrt{(\omega_0^2 - \omega^2)^2 + (b\omega/J)^2}} \quad (9)$$

In this case the resonance frequency is  $\omega_r = \sqrt{\omega_0^2 + 2\beta^2}$  and the phase shift between the pendulum and the external oscillator is:

$$\tan \phi = \frac{2\beta\omega}{\omega_0^2 - \omega^2} \quad (10)$$

## 3 Equipment

In this experiment you will use the torsion pendulum, the power supply for the driving motor, a low voltage power supply for the eddy current damper, two digital multimeters, and a stop watch.

Figure 1 shows the torsion pendulum and associated electronics. The motor which is used to force the pendulum (which will only be used in the second half of the experiment) is shown on the left of the diagram. The eddy current damping device is shown on the bottom of the diagram.

### 3.1 Notes on the Torsion Pendulum

- Do not forget to consider uncertainties in your measurements and calculations.
- Do not allow the current through the eddy current damper to exceed 2 A.
- Do not leave the current above 1 A for very long.
- The units on for the angle on the pendulum are not standard. Make up a name for the units and stick with it.
- Take the moment of inertia,  $J$ , of the torsion pendulum to be  $3.0 \pm 0.1 \text{ kg} \cdot \text{m}^2$ .

## 4 Procedure

### 4.1 Damped Oscillations

First, setup the torsion pendulum apparatus, with the forcing motor turned off and play with it to get an idea of how it works [*Leybold Scientific*, 2006a].

#### 4.1.1 Nearly Free Motion

With damping magnet turned off, find the natural frequency by measuring the period of the torsion pendulum. You will probably get better results if you use the time it takes the pendulum to oscillate 10 or 20 times to find the period. Note that even with the current off, friction does cause some damping of the pendulum. So the motion is not quite simple harmonic motion.

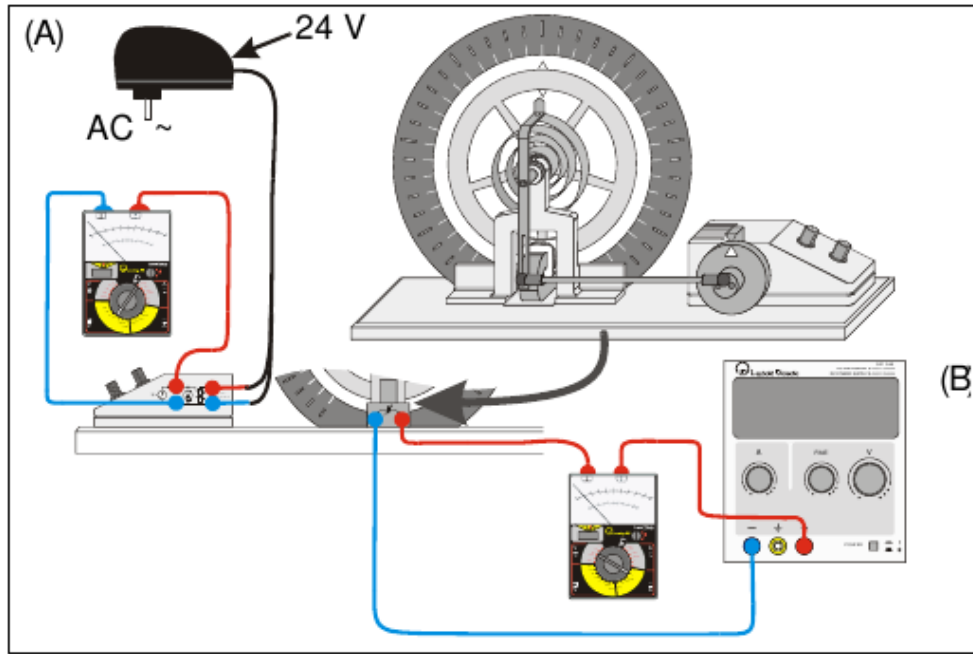


Figure 1: A schematic of the torsion pendulum apparatus [Leybold Scientific, 2006b].

#### 4.1.2 Damping Constant

Pick a small value of the damping current ( $0.1 \text{ A} < I < 0.3 \text{ A}$ ) and determine the damping constant. To do this first measure the period several times. Then start the pendulum from its furthest rotation point and measure  $\phi$  after each period. If you have difficulty taking the  $\phi$  measurements, you may need to try again.

Plot  $\phi$  versus time. Your plot should follow an exponential envelope. Fit your data to find a value for the damping constant,  $\beta$ .

Repeat this process for a higher value of the damping current ( $0.3 \text{ A} < I < 0.6 \text{ A}$ ).

#### 4.1.3 Nearly Critically and Critically Damped

Increase the damping current until the system only completes one oscillation after you let it go from its furthest rotation point, so the pendulum only crosses 0 once and then approaches 0 from the negative side. Find the oscillation time for this case by taking several measurements and taking the average.

Then increase the current until the pendulum approaches 0 from the positive side, but never crosses 0. This is the critically damped case. Use several measurements for the time it takes the pendulum to reach the equilibrium in this case.

Now use the critically damped case to get an estimate of the damping constant,  $\beta$ , in this case. Find the damping constant from equation 5 by measuring the time that it takes the pendulum to reach some fixed  $\theta$ , say  $\theta_0/10$ , after releasing it from its furthest rotation point. Note that in this case you can assume  $B = 0$  and that  $A = \theta(t = 0)$  in equation 5. Since  $\omega_0 = \beta$  in the critically damped case, you can use this  $\beta$  to get estimates of the damping coefficient,  $b$ , and the restoring torque,  $c$ . Recall that  $J = 3.0 \pm 0.1 \text{ kg} \cdot \text{m}^2$ .

Now put the current at a higher value (but remember to keep it under 2.0 A). This is an overdamped case. Find the oscillation time in this case.

## 4.2 Forced Oscillations

First, setup the torsion pendulum apparatus with the forcing motor turned on and play with it to get an idea of how it works [Leybold Scientific, 2006b]. Note that you may have to give the pendulum an initial displacement to get it moving, but that initial motion will damp out, leaving only the forced oscillations.

### 4.2.1 Resonance Curve

Find the resonance frequency of the torsion pendulum from a amplitude versus driving frequency plot for the torsion pendulum. In this section, you will need to decide on a procedure yourself, based on what you know about the device and resonance curves.

Find resonance curves for three different brake currents ( $\sim 0$  A,  $\sim 0.4$  A, and  $0.8$  A). Also, find the damping constant for those three cases. Repeat this process for a small ( $I \sim 0$  A) and a large ( $I \sim 0.8$  A) damping current.

## 5 Conclusions

1. Do the damping constants in Section 4.1.2 consistent with with what you would expect? If not, attempt to explain why not.
2. How do the three average oscillation times found in Section 4.1.3 compare? What does this tell you about the critically damped case?
3. In Section 4.2.1, how did the phase difference between driver and the oscillator vary with frequency? What was the phase at low frequency? At high frequency? Near resonance?
4. Considering the damping currents used, are the damping constants found in Sections 4.2.1, 4.1.3, and 4.1.2 consistent with each other? If not, attempt to explain why not.

## References

- Leybold Scientific, *Free Rotational Oscillations*, Leybold Scientific, [http://www.leybold-didactic.de/literatur/hb/e/p1/p1531\\_e.pdf](http://www.leybold-didactic.de/literatur/hb/e/p1/p1531_e.pdf), 2006a.
- Leybold Scientific, *Forced Rotational Oscillations*, Leybold Scientific, [http://www.leybold-didactic.de/literatur/hb/e/p1/p1532\\_e.pdf](http://www.leybold-didactic.de/literatur/hb/e/p1/p1532_e.pdf), 2006b.
- Thornton, S. T., and J. B. Marion, *Classical Dynamics of Particles and Systems*, fifth ed., Brooks/Cole — Thomson Learning, Belmont, California, 2004.