

# Physics 370 Lab Manual

Advanced Lab

Spring 2020



# Contents

<b>1: Syllabus</b>	<b>5</b>
<b>2: Unix Tutorial</b>	<b>7</b>
<b>3: Mathematica Tutorial</b>	<b>11</b>
<b>4: Rocket Lab</b>	<b>15</b>
<b>5: Magnetopause Lab</b>	<b>25</b>
<b>6: Speed of Sound Lab</b>	<b>39</b>
<b>7: Torsion Pendulum Lab</b>	<b>43</b>
<b>8: Formal Lab Report</b>	<b>49</b>



# Syllabus

## Contact Information

Instructor: Jim Crumley  
Office: 107 Peter Engel Science Center  
Email: [jcrumley@csbsju.edu](mailto:jcrumley@csbsju.edu)  
Phone: 363-3183  
Office Hour: 1:30 pm MWF days (or by appointment or just stop by)

## Course Information

Lab: 12:45 – 4:45 pm R  
Room: 112/118/146/319 Peter Engel Science Center  
Web Sites: <http://www.physics.csbsju.edu/~jcrumley/370/>  
Canvas: <https://csbsju.instructure.com/courses/14059>

## Experiments

Two lab assignments and three experiments will be completed by each lab group during the semester. All groups will be doing the Rocket and Magnetopause experiments, and either the coupled pendulum, speed of sound, or torsion pendulum experiment. The experiments will be graded based on your lab notebooks. As well as recording your data and doing the necessary calculations, be sure to answer all of the questions from the lab in your notebook. The final project for this course is a formal lab report about one of your labs.

## Course Schedule

Roughly half of the time there will be a lecture at 12:40 pm (or another time TBD) introducing the concepts behind a lab and tools needed for a lab. You are free to work on the experiments when you like as long as you turn the assignments in on time, though I recommend that you do at least some of your work during the scheduled lab periods. Note that points will be deducted for late assignments. Also, note the due dates for labs in the schedule below.

## Lab Reports

Keeping a clear, complete lab notebook is an important scientific skill and much of your grade for this class will be based on your notebooks. Refer back to your Physics 191 and 200 lab manuals for a list of what must be included in your lab notebook. Note in particular, that you must include a Procedure section which fleshes out what you actually did.

Additionally, whenever you are fitting a function, you should think about what your fit results mean. Do your results make sense? Is there another fit you should try? Should (0,0) be a point in your fit? Should you force the fit line to go through 0? Along the same lines, almost every number that you report should have an uncertainty. Always think about where uncertainty comes from in a given experiment, and how you are going to propagate uncertainty in your results.

Also, note that though your partners and you are expected to work on the lab together, each partner must hand in a lab notebook for each experiment. Finally, though you should discuss your answers to the lab questions with you partner, each partner should answer the questions in their own words.

Finally, whenever you create a plot in this class, you should save an electronic version of that plot, so that you can reprint it later and/or put it in your formal lab report.

## Formal Lab Report

The formal presentation piece of this course will be a formal lab report. Specific guidelines and topics will be provided later in the semester — see schedule below. Note that you should make your first draft a complete draft, so that I can give you the most helpful feedback.

## Schedule

---

Dates	Lecture	Due
1/16	Introduction / Unix Tutorial	Pre-Survey
1/23	Rocket Lab / Mathematica Tutorial	Unix Tutorial
1/30	Magnetopause Lab	Mathematica Tutorial
2/07	Torsion Pendulum & Speed of Sound labs	—
2/20	—	—
2/27	—	1st of 3 labs
3/05	Spring Break	—
3/12	—	—
3/19	—	—
3/26	A few words on Formal Lab Reports	2nd of 3 labs
4/02	Sr. thesis topics	—
4/09	—	Draft of Formal Report
4/16	Drafts returned	—
4/23	Scholarship and Creativity Day	attend Physics talks
4/30	—	3rd of 3 labs
5/08	—	Formal Report & Thesis topic & Post Survey

---

## Grading

The grade for this class will be based 25% on the formal lab report and 75% on the lab notebooks, tutorials, pre- and post-course surveys, and senior thesis proposals.

# Unix Tutorial

Those who do not understand Unix are condemned to reinvent it, poorly.

Henry Spencer, University of Toronto

Unix: Some say the learning curve is steep, but you only have to climb it once.

Karl Lehenbauer

## 2.1 Introduction

Modern versions of Linux allow an experienced computer user to do normal computing tasks immediately without any additional training, but to begin to harness some of the power of Linux a little work is required. In particular, much of the power of Linux and other Unix variants can be found in their command line interfaces (CLIs). Many current users of Microsoft and Apple operating systems have little experience with CLIs and are only used to graphical user interfaces (GUIs). The purpose of this exercise is to you expose to the Linux CLIs in order to give you the experience necessary to be more productive using Linux and other Unix operating systems in the future. Note that if you find the Unix tools that you will learn about here useful, there are options for available for installing them on your Microsoft Windows computers. MacIntosh OS X users will find that most of the tools mentioned here are already installed on their computers (though they may not be well advertised), and the once that are not can be downloaded fairly easily.

## 2.2 VMWare

Currently, there are few student accessible Linux terminals on campus. You can access campus using VMWare Horizon View. VMWare is software that allows you to remotely log into both Linux and Windows software. You can also install VMWare on your own computer.

Instructions for using VMWare are available at [https://sharepoint.csbsju.edu/itservices/kb/Pages/vmware\\_vmware.aspx](https://sharepoint.csbsju.edu/itservices/kb/Pages/vmware_vmware.aspx).

## 2.3 Account Setup

You will probably find many occasions during this lab when you will want to transfer files back and forth between your Windows and Unix accounts. While there are many ways to do

this (including email them to yourself, put them a USB drive, or on a CD), the easiest ways involve transferring the files directly between the accounts involved. To get this to work takes some setup. In this section you will see how you can get direct access to your Windows files from Linux, and vice-versa.

Some documentation about the CSB/SJU Linux system is at: <http://linux.csbsju.edu/doku.php> . Also note that you can run a single Linux terminal window using ssh ([https://sharepoint.csbsju.edu/itservices/kb/Pages/linux\\_ssh.asp](https://sharepoint.csbsju.edu/itservices/kb/Pages/linux_ssh.asp)) or a remote Linux desktop using Horizon View (<http://linux.csbsju.edu/doku.php/vmview>) on your own computer.

### 2.3.1 Windows File Access from Linux

Your CSB/SJU OneDrive should be available from any browser on Linux. Log in and access your files from: <https://www.office.com/>, or whatever way you like to get to OneDrive.

You can also sync your OneDrive files using the “onedrive” command - <http://linux.csbsju.edu/doku.php/onedrive> .

## 2.4 VMWare Horizon View

While logged into your own computer, or one of the campus Windows computers, run through the Horizon View Setup instructions - <http://linux.csbsju.edu/doku.php/vmview> . While setting it up on step 10 you should pick the “Physics Student Pool.”

### 2.4.1 Linux File Access from Windows

- 1.
2. On Windows open the “Computer” of File Explorer, and click “Map Network Drive”.
3. On the Map Network Drive Window, pick any unused letter for the Drive: choice (X:, Y:, Z:, etc.) . For the folder, put:

```
\\elm.ad.csbsju.edu\YOUR_UNIX_USERNAME
```

where you should replace YOUR\_UNIX\_USERNAME with your Unix username (e.g. abstuden).

should also be accessible from other Windows programs.

## 2.5 Playing with the GUI

Before we get to learning about the Linux CLI, I would like you to play around a bit with the Linux GUI. Explore the menus. Try out a few programs. Change some of the settings (maybe the wallpaper?). Then pick a game (alas, there used to be more choices) that you have never played before and try it out for a few minutes. Record down the name of the game, how it works, and what score you got (if the game has a score) in your lab notebook. Or since their are so few games, try another program that you have never used before, play with it, and write notes on what you have tried. Some good ones to try include gimp (Gnu Image Manipulation Program - under “Graphics” on the menu), pencil (also under “Graphics”), or Aladin (under the “CSBSJU—Physics” menu).



## 2.6 Tutorial

The Unix tutorial at <http://www.ee.surrey.ac.uk/Teaching/Unix/index.html> will be the focus of this exercise. Start at the first section and work your way through the entire tutorial. Make sure that you do all of the exercises listed.

The tutorial is setup for users at another college, but all of the commands in it should work here as well, though the file paths are different. Another thing to note about the tutorial is that it uses the command shell called **csh**. Here at CSB/SJU we use another shell, **tcsh** which is based on **csh**, but has some more advanced features. This should not be a problem because **tcsh** is more or less a superset of **csh**, so you should be able to do everything in the tutorial. Note, though that there are other shells that are not as compatible with **tcsh**. In particular, the most commonly used shell on Linux is **bash** and **bash** has many syntax differences from **tcsh**. If you would like to try a different shell, you can type its name at the command prompt. You can also change your default shell, but I wouldn't recommend that at this point.

To run through this tutorial you should log into one of the department's Linux computers. Start up a web browser — Firefox, Google Chrome, Konqueror, or any other browser should work fine — and go to the page mentioned above. To run the examples described in the tutorial you will also need to have a terminal window (also known as a command shell) open. There are several types that will work: **xterm**, **konsole**, **gnome-terminal**, and **rxvt** to name a few. You should be able to find them under one of the menus in the GUI.

For this exercise, you need to keep a record of the commands that you typed. I recommend that you use the **script** command to do this. After you open a terminal type: **script tutorial.txt** — where “tutorial.txt” is the file name that your commands will be saved in. When you are done with you session, type “exit” and it will be saved. If you have to stop this exercise and start it up again you will want to use a different file name the second time (e.g. **script tutorial2.txt**, otherwise you will lose your work from the first file.

Note that for this exercise each of you should work on your own. You are free to ask for help from other students, but do the entire tutorial yourself.

Before you get started let me add a couple more time saving hints. In **tcsh** (and **bash**), you can scroll through previous commands that you have typed with the up and down arrow keys. This is a big time saver if you make a typo. “Tab completion” is a related feature. When you are typing the name of a command (or file), if you hit the “Tab” key, bash will attempt to complete the command (or file) name for you.

Also, Unix (or more accurately the X Windows System which provides the GUI for most Unix systems) has several methods of copy and pasting. The Unix style way of copy and pasting is to select text using the left mouse button, then move the pointer to the place you want to paste to, and then click the middle mouse button. Try it one or twice. Copying and pasting this way would make it quite easy to do this entire assignment without doing any typing, but I suggest you type most of the commands given, since that will make it more likely that you will remember them. Many programs also support the Microsoft Windows style copy and pasting from their “Edit” menus (also available using Control-C, -V, and -X). Another trick with the middle mouse button involves web browsers. If you middle click on a link in most Unix browsers, the linked page will open in a new tab or window. Also, if you select the text of an URL with the left mouse button, and you paste to a blank spot on web page, the URL will be loaded on the browser. (You can also configure Firefox to act this way

on Windows and Mac computers.)

Also, if you get stuck while running a program from the terminal try hitting Control-C, which should exit out of the program. If that does not work, you can also try Control-Z, which suspend the program.

Another useful command is **finger**. Try: “`finger YOUR_USERNAME`” and “`finger jcrumley`”.

## 2.7 Post-Test

After completing the tutorial, do the following tasks:

- Make a directory called “370” in your home directory, and put the text file(s) that you created recording your work on the tutorial in that directory. As part of your grade for this tutorial I will look at those text files, so in order to enable me to do that, you will have to change the permissions so that I can look at them. Note that you will need to add “read” and “execute” permissions for “group” for your home directory and the “370” directory. You will also have to add “read” permissions for the files that hold the recording of your session. You may want to use the “X” option to `chmod` (as opposed to “x”). I suggest that you keep all of your lab files in this directory, or even better in subdirectories for each lab.
- List *full* details about *all* of the files (including “hidden” files) in a directory using `ls`, listing the files from the newest file to the oldest. You will need to look at the documentation (**man** page) to figure this out. (Note: you should only have to use `ls`, `sort` will not be needed). Use this command to list the files in the directory “`/usr/people/plasma/group_docs`”. Save the command that you used and your results to a file, print the file using “`enscript -r FILENAME`”, and tape the results in your lab notebook.
- Type “`more ~jcrumley/public_html/370/students/{$USER}`” to receive a special message. Write this message in your lab notebook. How does this command work? Listing the contents of that directory with “`ls -l`” may help you figure it out. ’

## 2.8 Turning in your work

Hand in your lab notebook when you are done with this exercise.

# Mathematica Tutorial

I had a feeling once about mathematics – that I saw it all. Depth beyond depth was revealed to me – the Byss and the Abyss. I saw – as one might see the transit of Venus or even the Lord Mayor’s Show – a quantity passing through infinity and changing its sign from plus to minus. I saw exactly why it happened and why tergiversation was inevitable – but it was after dinner and I let it go.

Winston Churchill

Anyone who cannot cope with mathematics is not fully human. At best he is a tolerable subhuman who has learned to wear shoes, bathe and not make messes in the house.

*Time Enough for Love*  
Robert Heinlein

## 3.1 Introduction

Computational tools beyond hand held calculators are now a necessary part of any physicist’s repertoire. A wide variety of tools are available including computer codes that are written to solve specific problems, mainstream software tools (such as spreadsheets and databases) which can be applied to physics problems and finally mathematical tools (such as Mathematica, Matlab, Maple, Mathcad, Sage et cetera). We will make use of tools of all of these types in this course. The purpose of this exercise is to introduce you to one of these mathematical tools, Mathematica. Mathematica distinguishes itself from many of its competitors with its abilities to do exact symbolic, as well as numerical, calculations. These abilities allow Mathematica to, for example, give the solution of

$$\int \cos(x)dx = \sin(x),$$

while most other programs would only be able to solve problems such as

$$\int_0^{\pi/2} \cos(x)dx = 1.0.$$

Keep these differences in mind while doing the exercises below.

In this exercise, you will first work through a Mathematica tutorial to get an idea of Mathematica’s abilities. Then you will use Mathematica to work a more complicated physics problem.

## 3.2 Tutorial

Start up Mathematica (this tutorial can be run on any OS that Mathematica works on).

For this tutorial you will have two choice. You can you the old-fashioned text-based tutorial or a video screencast. It is up to you which one to try — you should get similar information from each.

If you want to use the text based tutorial, find and open up the “Ten Minute Tutorial” — there should be a link to it off of this lab (or the lab web site). Do not let the name fool you — it should take you much more than 10 minutes. Note that when you download Mathematica files you will often have to right click on them and “Save as ...”, then open them up with Mathematica.

If you want to use the screencast, go to the “Hands on Start to Mathematica”

<http://www.wolfram.com/broadcast/screencasts/handsonstart/>. If you do the screencast when other people are around, please make sure that you use headphones. I will not be responsible for any violence inflicted on you by other people if you blast this screencast in a public lab.

As you are working through the tutorial feel free to change things in the examples. Try out different numbers, functions, et cetera so that you have a better idea of how Mathematica works. Save a copy of the the tutorial in your home directory so that you can keep track of the changes you make while working through the tutorial.

Complete the following exercises based on the tutorial. For this exercise, you can either do things on paper and hand-in a paper copy, or upload your results to the course Canvas site. Where appropriate print out (or save to a separate Mathematica sheet) plots and segments of Mathematica code showing your answers. If you decide to upload the assignment, please upload the notebook (.nb) file and also a pdf copy of file. (Print the file to a pdf.)

The easiest way to answer the following questions is probably to have two Mathematica windows open. Keep the tutorial open in one window, and do your calculations in separate window. In your calculations window you can copy and paste all of the questions below. Then you complete each calculation under the corresponding question. When you are done you can just print the results from your window (or upload them to Canvas). Also, do not forget to include a written answer where one is requested.

The page numbers below refer to where you will find similar calculations in the text tutorial.

1. (p. 3) Calculate  $21^{31}$  and  $21.^{31}$  power. What is the difference between these results? Why are they different? Which answer would most other mathematical tools give? Why?
2. (p. 5) Get a numerical expression for the first 40 digits of  $e^\pi$ .
3. (p. 6) Expand and simplify  $(a + b)(a - c)(b - d) + (d - c)(b - a)(c + a)$ .
4. (p. 8) Plot  $\sin x$ ,  $\sinh x$ , and  $\sin(\sinh(x))$  from 0 to 5 on the same plot. Also plot in three dimensions the function

$$\arctan x \ln y$$

over the range from 0 to 5 for  $x$  and over the range from 1 to 3 for  $y$ .

5. (p. 9) Calculate

$$\frac{d}{dx} \operatorname{arcsinh}(ax) \operatorname{arcsinh}(bx).$$

The compute

$$\int \arctan(ax).$$

Integrate the result. Finally, numerically integrate

$$\int_{-\infty}^{\infty} e^{-2x^2}.$$

6. (p. 11) Solve the system of equations  $x^2 - y^2 = a$  and  $x + 3y = b$ .

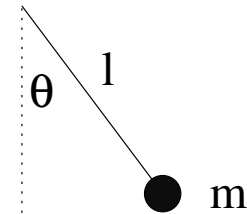
7. (p. 13) Solve and plot the solution to the differential equation

$$\frac{d^2y}{dx^2} + y + 10 = 0,$$

where  $y(0) = 0$  and  $y'(0) = 0$ .

### 3.3 Nonlinear Pendulum

In this part you will put to use some of the Mathematica commands that you learned above. In deriving the motion of a simple pendulum (as seen on the right), using torques (or forces) leads to the equation of motion:



$$\frac{d^2\theta}{dt^2} + \frac{g}{l} \sin \theta = 0 \tag{3.1}$$

In order to get this equation in the form of the simple harmonic oscillator equation, we typically assume that the angle  $\theta$  is small so that  $\sin \theta \approx \theta$ , which results in:

$$\frac{d^2\theta}{dt^2} + \frac{g}{l} \theta = 0 \tag{3.2}$$

In this exercise you will explore how justified this approximation is. In some parts of this exercise you may have to force Mathematica to make more precise calculations. You may have to use the Accuracy, WorkingPrecision, AccuracyGoal, and PrecisionGoal statements to get useful results. For the purposes of this exercise we will set  $g/l = 1$  to simplify the math. We will also assume that the pendulum always starts out at rest ( $\frac{d\theta}{dt}(t = 0) = 0$ ).

1. Find how varying the starting angle alters the angular frequency of the pendulum when you don't make the small angle approximation. Use Mathematica to solve the pendulum differential equation above for the case where the initial pendulum amplitude (angle) is 1 radian. From this solution, find the pendulum frequency (1/period) for this case. You will probably want to use the NDSolve and FindRoot functions to do this.

Next, solve this equation for initial amplitudes from 0 to  $\pi/2$  radians and then plot the pendulum frequency versus pendulum (angle) amplitude for your results. Also, on the

same figure include a plot of what the angular frequency versus amplitude is assuming the pendulum is a simple harmonic oscillator. Take enough points so that you get a fairly smooth curve. You don't have to use Mathematica to plot your results — any plotting program is fine.

2. Calculate at what amplitude the angular frequency differs from the ideal angular frequency by 10%? By 1%? By 0.01%? By 0.0001%? What does this tell you about the accuracy of the small angle approximation? Under what conditions is this approximation valid?
3. One of the applications of pendulums is in clocks. Calculate how long it would take for a clock using this pendulum to be displaying a time that is off by a minute if the amplitude of the pendulum is  $0.1^\circ$ ?  $1^\circ$ ?  $10^\circ$ ?  $30^\circ$ ?  $90^\circ$ ?

# Rocket Lab

## A Severe Strain on the Credulity

As a method of sending a missile to the higher, and even to the highest parts of the earth's atmospheric envelope, Professor Goddard's rocket is a practicable and therefore promising device. It is when one considers the multiple-charge rocket as a traveler to the moon that one begins to doubt ... for after the rocket quits our air and really starts on its journey, its flight would be neither accelerated nor maintained by the explosion of the charges it then might have left. Professor Goddard, with his "chair" in Clark College and countenancing of the Smithsonian Institution, does not know the relation of action to re-action, and of the need to have something better than a vacuum against which to react ... Of course he only seems to lack the knowledge ladled out daily in high schools.

New York Times Editorial, 1920  
Concerning Robert Goddard, rocketry pioneer

## 4.1 Introduction

The problem of the flight of a rocket is an interesting problem for both practical and more theoretical reasons. The flight of a rocket can be pursued at several different levels theoretically. The simplest level is a basic constant force problem using Newton's Laws:

$$\sum \vec{F} = m\vec{a}. \quad (4.1)$$

At this simple level we would only deal with two forces — gravity and rocket thrust. In the case of vertical flight this leads to:

$$T - mg = ma = m \frac{dv}{dt} = m \frac{d^2y}{dt^2} \quad (4.2)$$

where  $T$  is the thrust. Assuming constant thrust, solution of this differential equation is trivial:

$$a = \frac{T}{m} - g \quad (4.3)$$

$$v = v_0 + at = v_0 + \left(\frac{T}{m} - g\right)t \quad (4.4)$$

$$y = y_0 + \frac{1}{2}at^2 = y_0 + \frac{1}{2}\left(\frac{T}{m} - g\right)t^2. \quad (4.5)$$

This solution is appropriate in cases such as in when the rocket's mass is almost constant and air resistance is negligible, but neither of these conditions will hold for this lab.

In order to analyze our model rockets we will have to deal with at least three complicating factors. In our rocket engines, thrust as a function of time will be much closer parabolic than constant, so we will have to deal with varying the thrust. Next, the mass of the rocket will change as it burns off its propellant, so we will not be able to use a constant mass in our equations. Finally, the air resistance will add another force to our equation of motion.

#### 4.1.1 Time-Varying Thrust

The simplest time-varying thrust that we can consider is essentially a square wave — the rocket engine is on at some constant value until it burns out. While this is not a good approximation to our rocket, it is a useful case to consider because it shows some features that will also appear in our more realistic thrust curves. The on/off character of this type of thrust curve leads to the technique of splitting the problem in two. First, solve for the rocket's motion for the case of constant thrust, using the equations 4.3–4.5. Then after the rocket engine quits, start with initial conditions based on when the engine stopped and solve using the same equations with a thrust of 0.

In order to deal with thrust curves that are more realistic than square waves, we need to come up with expressions for thrust as a function of time:  $T \rightarrow T(t)$ . We will find the thrust curves in two ways: by using the manufacturer's published curves (Section 4.2.2) and experimentally using a force meter (Section 4.2.3).

#### 4.1.2 Time-Varying Mass

Since we will not be able to directly measure how the mass of the rocket engine changes during the rocket's flight, we need a proxy that will allow us to deal with mass as a function of time ( $m \rightarrow m(t)$ ). The obvious choice is to assume that for each unit of mass that is lost a constant amount of thrust is derived:

$$-\frac{dm_e}{dt} \propto T. \quad (4.6)$$

or

$$\frac{dm_e}{dt} = -\alpha T(t), \quad (4.7)$$

where  $\alpha$  is a proportionality constant. With this idea we can use the initial ( $m_{ei}$ ) and final ( $m_{ef}$ ) mass of the rocket engine along with our thrust curve to get  $m_e(t)$ . Solving this differential equation we get:

$$m_e(t) = m_{ei} - \alpha \int_0^t T(t') dt' \quad (4.8)$$

or after the engine is exhausted:

$$\alpha = \frac{m_{ei} - m_{ef}}{\int T(t) dt} \quad (4.9)$$

The quantity  $\int T(t) dt$  is known as the impulse, and it is provided by the engine manufacturer, though it also can be calculated directly from the thrust function. So we can find  $\alpha$  using the equation 4.9 and then use it in the equation 4.8 for the time varying mass,  $m_e(t)$ .



### 4.1.3 Air resistance

Air resistance is a complicated subject and for most real problems it cannot be dealt with analytically. Typically one of a variety of approximations is applied depending upon which fluid regime the problem falls under [*Marion and Thorton*, 1995]. For this lab we will use :

$$f(t) = -bv(t)^2 \quad (4.10)$$

where here “-” means that the drag force is in the opposite direction from the direction that the rocket moves and  $b$  is the drag constant. Other common forms for the drag force depend on the speed to the first power. The constant  $b$  depends on the fluid the rocket is moving through and the shape of the rocket:

$$b = \frac{1}{2}\rho c_d A \quad (4.11)$$

where  $\rho$  is the density of air,  $c_d$  is the drag coefficient, and  $A$  is the surface area of the cross-section of the rocket. We will measure the cross-sectional area, and the density of air can be determined from the ideal gas law and the weather conditions at the time of the flight of the rocket. The drag coefficient depends on the shape of the rocket and the smoothness of its surface. The drag coefficient is one of the major unknown quantities that we will determine in this lab. Values for this quantity should end up being somewhere between 0.2 and 2.

Since the form for the drag force law changes as the speed of an object changes, the drag coefficient is not constant over wide speed ranges. In this lab we will first use one type of rocket engine to determine the drag coefficient. With another type of rocket engine we will then use the drag coefficient as a known value, and predict the maximum height of the rocket.

### 4.1.4 Combined Equation

Finally, we get to an equation including time-varying thrust, time-varying mass, and air resistance

$$a(t) = \frac{T(t)}{m(t)} - g - \frac{bv(t)^2}{m(t)} \quad (4.12)$$

This is the equation that we will solve to find the drag coefficient for the rocket.

## 4.2 Experimental Procedure

### 4.2.1 Building your Rocket

Follow the instructions included with the rockets for putting your rocket together. Put your parachute together, but do not attach the nose cone or parachute to the shock. You will attach the cargo section to the shock cord when you are going to launch. Sand and paint your rockets in order to have a smooth surface that minimizes drag.

1. Does painting your rocket cause have any positive or negative effects on the range of the rocket? If so, try to estimate these effects.

### 4.2.2 Finding Thrust Function from Manufacturer's Thrust Curves

For manufacturers thrust curves, use the files at <http://www.physics.csbsju.edu/~jcrumley/370/rocket/>. Take the force uncertainty in these files to be  $\pm 0.1$  N. Note that for this lab (and for the others), you should keep electronic copies of any plots that you make.

### 4.2.3 Experimental Determination of Thrust Curves

Thrust curves will be determined using a force meter connected to a computer. Make sure that the interface is set to take data at a rate of at least 100 samples per second. See the pictures on the web for one possible way to set up this equipment. The equipment should be setup under a hood to minimize the smoke dispersal through the building. Calibrate the force meter with known masses. Have your instructor check your setup before firing the rocket engines.

The Vernier Force Sensor, LabQuest Mini sensor interface, and Logger Pro software. When you plug connect the LabQuest Mini to the computer its LED will initially be red. If the interface is getting enough power, the LED will turn amber. Then, when you start LoggerPro, it should turn green. If it does not turn green, the sensor will not work. Not that if you are using a USB extension cable, you may also need to use a powered USB hub.

Vernier Graphical Analysis is a Google-Chrome app similar to Logger Pro. We will use this software to collect the thrust curve data. To install it go to the following link from within Google-Chrome and install the app.

<https://chrome.google.com/webstore/detail/vernier-graphical-analysis/dncgedbnidfkppmdgfgid>  
(Or follow the link from: <http://www.vernier.com/products/software/ga-chrome/>)

Note that you may need to be logged into a Google (Gmail account) within Google Chrome to run this app. If no one in your lab group has one, let me know.

The Labquest Mini interface should be connect to the computer that you are running Google-Chrome on. Once you have you rocket engine setup you should zero out the force sensor from within Vernier Graphical Analysis.

Verify the thrust curve by firing three engines of a given type. Plot your three data curves. Include these plots in your lab notebook. Also, be sure to save a file of your data and export your data into a form that is usable by other programs (csv or txt files work best).

Finally, please clean the fume hood when you are done with your rocket firings.

1. How much variation is there between the curves from the three trials? How much of this variation do you think is due to the instruments used to measure the thrust curves and how much is due to intrinsic variations in the rocket engines?
2. How well do your thrust curves compare to the manufacturer's curves? Are the differences between them systematic or random?

Based on your results in this section and the previous section, decide whether you are going to use the data from the manufacturer's thrust curves or your experimental data to model the thrust of the rockets. Justify your decision. If you decide to use your experimental data, then you should come up with an experimental thrust curve that combines your trials and an estimate of the uncertainty for it.

#### 4.2.4 Rocket Launches

At least four people will be needed to complete the rocket launches, so you will need to coordinate with other groups to schedule your launches. If no one in your groups has done a launch previously, then your instructor will want to go with to help you set up. Note that you will want to record the temperatures and pressure for the dates of your launches so that you can calculate the air density.

##### Equipment Checklist

- Your rocket and parachute
- Cargo section and nose cone
- Altimeter with battery
- Laptop with cable for altimeter (optional)
- Four A and four B engines
- Igniters
- Recovery wadding
- Launch pad
- launcher with key
- Two tripods with angle measuring devices
- 300 foot measuring tape
- stop watches

Rocket engines are described by names such as A8-3. The letter in the name stands for the total impulse of the rocket, with A engines having total impulse of up to  $2.5 \text{ N}\cdot\text{s}$ , with each subsequent letter having up to twice the total impulse (B has  $5 \text{ N}\cdot\text{s}$ , etc.). The first number in the name is the rockets average thrust in N. Finally, the last number is the delay time in seconds between the burnout of the rocket and the ejection of the parachute. In practice, this delay time seems to vary quite a bit from the published values.

Do three rocket launches with A engines and use this data to determine the drag coefficient of your rocket. If any of the three launches seem to be much higher or lower than the others, do a fourth launch. Also, do three launches with B engines and compare this data to predictions based on the drag coefficient from the A engine launches.

Several measurements will be needed for each rocket launch including the apogee (maximum altitude) of the rocket, the flight time till apogee and the initial and final mass of the rocket engine. Note that you will also need the total mass of the loaded rocket for the calculations — the engine masses are just used to find how the rocket mass changes. As described above, you will also need to determine the cross-sectional area of the rocket. Finally, you will need some weather conditions for each time that you launch, in order to determine the density of air. The name of individual measuring each piece of data should be recorded as well as the data itself in order to aid in the isolation of any systematic error.

#### 4.2.4.1 Apogee Time

While doing rocket launches, anyone (including the rocket launcher) not making angle measurements for the geometrical apogee determination should measure the time to apogee. Time to apogee can be difficult to determine, so having several people measure it and taking a mean is advantageous.

These rockets have an explosive charge which will deploy their parachutes. The second number on the rocket engine name is the number of seconds until the charge is supposed to detonate, but for real rockets the time till the charge varies wildly from this number. During a flight, depending on the engine and the mass of the rocket and the performance of the engine, the apogee will happen two different ways. Either the rocket's motion will turn over before the parachute pops out, or the apogee will occur when the parachute pops out. If the motion turns over, determine the apogee based on when the rocket is at its highest height. If the parachute comes out first, mark the apogee time as when the parachute comes out since the rocket's upward motion will be halted by the parachute. You should keep this behavior in mind when comparing your experimental results to the theoretical calculations, since the theoretical calculations do not account for the possibility of the parachute coming out early.

#### 4.2.4.2 Apogee Determination

Two methods will be used to determine the maximum altitude of the rocket: geometrical and electronic. The geometrical method relies on multiple observers determining the angle the rocket makes with respect to the horizontal at its maximum height. The electronic method relies on an altimeter that measures pressure changes that occur as the rocket rises in order to find its altitude.

##### 4.2.4.2.1 Electronic Apogee Determination

For the electronic method we will be using PerfectFlite Pnut manual [*Perfect Flite*, 2012c] and/or APRA manual [*Perfect Flite*, 2012a] altimeters. (See the links in the previous section for more details on the altimeters. Note that the altimeter may not function properly when the temperature is much below 0 °C. The altimeter reports the apogee altitude as a series of beeps after the flight. The Pnut altimeter can also store flight profile information (height versus time), which can be retrieved by attaching it to a computer. Keep track of the order of your (and other groups) flights, so that the data can be matched up with the correct flight. Detailed instructions for using the data retrieval program are included in the DT3U manual [*Perfect Flite*, 2012b].

In order to use the altimeter you will have to install the payload section on your rocket and include the altimeter inside the payload section. Make sure to secure the payload and altimeter section to the rest of your rocket, so that it all descends as one piece. After the flight connect the altimeter to the computer using the Serial/USB cable and extract the data. Be sure to save the data with a name that you will be able to remember later on.

##### 4.2.4.2.2 Geometrical Apogee Determination

The simple method of geometrically determining the apogee of the rocket only requires the determination of one angle and one distance. An observer measures their distance from the launch site and then measures the angle the rocket is above the horizontal at its apogee. In this case the altitude is

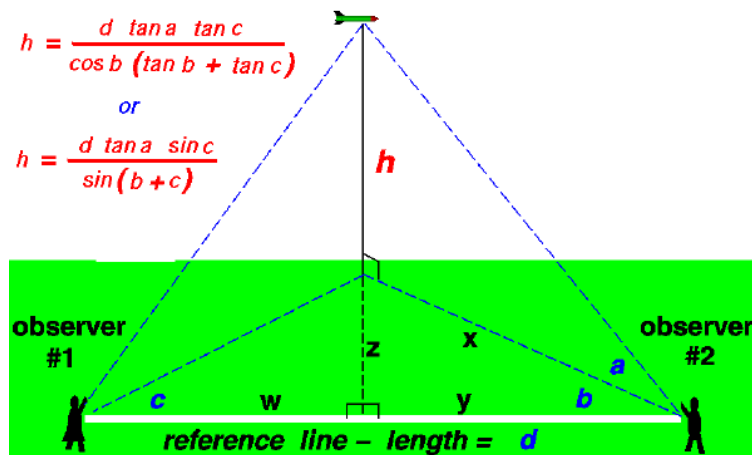


Figure 4.1: The figure above shows how to determine the altitude of the rocket using measurements from two observers. This figure is adapted from <http://www.grc.nasa.gov/>.

$$h = x \tan \theta. \quad (4.13)$$

This method's accuracy is limited by the need for the rocket's launch to be perfectly vertical, but it is still a good first approximation to finding the altitude. For each flight you should use this method, as well as the one described below to determine the altitude. Note that this method gives the most accurate results when  $\theta$  is near  $45^\circ$ .

Figure 4.1 shows a more reliable method of determining altitude. In this method only the distance  $d$ , which is the distance between the two observers making the measurements, is required. As shown in the figure only the three angles  $a$ ,  $b$ , and  $c$  are required. These angles are the horizontal angles ( $b$  and  $c$ ) between the line connecting the two observers and the line of the rocket's flight. The other angle ( $a$ ) is the vertical angle between the ground and the rocket's location. With this method one observer could measure one angle while the other measures two angles. To make things more robust we will have both observers measure both the horizontal and vertical angles. This will allow us to make two altitude calculations with the same set of data — one set where both angles are used from one observer and the other set where both angles are used from the other observer. Using these measurements the height of the rocket is

$$h = \frac{d \tan a \sin c}{\sin(b + c)} \quad (4.14)$$

[Benson, 2003]. Beware that this formula assumes that all angles are less than 90 degrees. If your angles are larger, then you have probably made a mistake. When deciding where to locate the observers for your launches, note that this method also gives the best results when the angles are near  $45^\circ$ . For this reason, you probably want to set up your observers so that their locations make a equilateral right triangle, with the launching pad at the right angle. In order to get angles near  $45^\circ$  for the vertical angles, you will also want the distances from the observers to the launch pad to be roughly the same as the expected maximum altitude of the rocket. Typical apogees for the experiment are roughly 40 m for A engines and 100 m for B engines.

Note that you should end up with four geometrical estimates of the apogee height for each launch — two from the simple one-angle method and two from the multi-angle method.

Note that this semester we will be piloting using an Android tablet app to find the angles.

No matter how you find the angles, be sure to include uncertainty estimates for the angles, and any values that you calculate using the angles.

## 4.3 Data Analysis

### 4.3.1 Using Mathematica

We will use Mathematica to solve our version of the rocket equation (equation 4.12). While performing this analysis you can refer to the sample file performing this calculation in a simplified case.

The first step in this calculation is to enter your thrust data. Those groups that determined the thrust curve experimentally should use evaluate their two types of thrust data, and use whichever type they find appropriate here. Be sure to justify your choice. Note that which whichever type of data you use, you need to have your thrust curve defined from 0 up until roughly 5 or 10 seconds. You may want to extend your thrust curve by putting in thrusts of  $N$  for times greater than 1 second in your thrust curve files. In other other, add ordered pairs like “1 0” ... “10 0” to your files.

In order for Mathematica to be able to use this data you must enter the data into a table. To do this you will likely want to use the `Import` or `ReadList` function. Something along the lines of

```
table1 = Import[“/home/f13/abstuden/A8_thrust_data”]
```

or

```
table1 = ReadList[“/home/f13/abstuden/A8_thrust_data”, {Number, Number, Number, Number}]
```

should work. The first parameter is the path to the data file, while the other parameters correspond to the columns in your data file. You may need to edit your file to get it into a form that Mathematica can deal with. In particular, you may want to use a text editor to remove the header lines from the data file. Once you have your data table, you will probably want to use the `Interpolation` function to make the data into a continuous function. Be sure to graph your thrust curve over the full time range that you want do calculations over to be sure that it looks reasonable. Mathematica sometimes puts spikes and other unphysical features into `Interpolating Functions`. If you have problems of this sort, you may have to alter some of the options to `Interpolation`. For each engine, calculate the total impulse of the engine and compare it to the expected value.

For the A engine data, consider the drag coefficient,  $c_d$  to be an unknown and solve for it by trial and error for each of the three launches that you did with the A engines. To find  $c_d$  vary it until your  $y(t)$  plot matches your measurements of the rocket flight. Find the mean and standard deviation for the drag coefficient.

For the B engines, use the drag coefficient that you determined above to find a predicted apogee (including uncertainty) for the B engine flights. Also, re-calculate the drag coefficient using your B engine apogee data as the known quantities.

Include a printout of one version of A engine Mathematica analysis and one version of your B engine Mathematica analysis in your lab notebook.

1. Compare the prediction of the B engine apogee with your experimental determinations of the apogee. Do they agree? Why or why not?
2. Compare the estimates of the drag coefficient that got for the A engines with the estimate from the B engines. Do they agree? If not, how could you explain the discrepancy?

## 4.4 Conclusion

As well as answering the questions listed above, comment on your results.

1. Describe in more detail than is presented here how the electronic altimeter works.
2. Explain how the geometrical method of determining altitude using two observers improves accuracy. Hint: there is more to it than simply having better statistics to average over.
3. Do your results support the idea of the drag coefficient being a true constant for the speed regime your rockets were tested in? Why or why not? Make sure to use the uncertainties that you obtained for the drag coefficients in defending your answer.

## 4.5 Bibliography

Benson, T., A beginner's guide to model rockets, <http://www.grc.nasa.gov/WWW/K-12/airplane/rkthowhi.html>, 2003.

Marion, J. B., and S. T. Thornton, *Classical Dynamics of Particle and Systems*, Thomson, Brooks/Cole, Pacific Grove, California, 1995.

Perfect Flite, *APRA Users Manual*, <http://perfectflite.com/APRA manual.pdf>, 2012a.

Perfect Flite, *DT3U Users Manual*, <http://perfectflite.com/DT3U manual.pdf>, 2012b.

Perfect Flite, *Pnut Users Manual*, <http://perfectflite.com/Pnut manual.pdf>, 2012c.





# Magnetopause Lab

Space is big. You just won't believe how vastly, hugely, mind-bogglingly big it is. I mean, you may think it's a long way down the road to the drug store, but that's just peanuts to space.

Douglas Adams, **The Hitchhiker's Guide to the Galaxy**

It is contrary to reasoning to say that there is a vacuum or space in which there is absolutely nothing.

Descartes

## 5.1 Introduction

Though outer space is often described as a vacuum, in actuality there are particles everywhere in the solar system, and there is continuous activity in the region between the celestial bodies. The study of this part of the solar system is called Space Physics [*Kivelson et al.*, 1995], or sometimes Plasma Space Physics after the particles that fill this region. A plasma is a ionized gas, where some of the electrons have been stripped off of atoms creating a mixtures of free electrons and positively charged ions.

Most of the plasma particles filling the solar system can trace their origin to the solar wind, which comes from the outer region of the sun's atmosphere continually being blown off of the sun. The solar wind typically has a speed of about 400 km/s, though it can range up to about 1200 km/s.

### 5.1.1 The Magnetosphere

When the solar wind reaches the earth, it interacts with the earth's magnetic field to form a region known as the magnetosphere (See Figure 5.1). The earth's magnetosphere is the region of space where the earth's magnetic field dominates behavior of the plasma, just as the sun's magnetic field does in the solar wind. The magnetosphere has many regions, though only a few will be of interest to us in this lab.

The first region of interest (though it is not technically part of the magnetosphere) is known as the bow shock. The bow shock is caused by the solar wind meeting an obstruction its flow in the form of the earth. The solar wind has to flow around the the earth, and in doing a shock formed. The bow shock gets its name from the fact that the physics behind the creation of this shock are similar to the shock formed by the bow of a boat as the boat moves through the water.

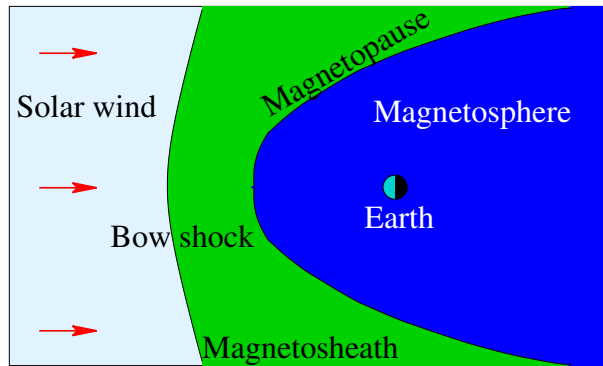


Figure 5.1: This figure shows the basic structure of the magnetosphere.

Nearer to the earth is the magnetopause. The magnetopause marks the furthest that the earth's magnetic field extends, which makes the magnetopause the boundary of the magnetosphere. The magnetosheath is the region of space between the bow shock and the magnetopause.

Nearer still to the earth are the ring currents and radiation belts (also known as the Van Allen belts). These areas are located within a few  $R_E$  of the earth above the equator and low latitudes. The relatively high number of high energy particles in these areas make this region dangerous for spacecraft and difficult to observe.

### 5.1.2 Solar Activity

The surface of the sun, and consequently the solar wind, experiences a variety of events, including flares and coronal mass ejections (CMEs). These events can change both the speed and the number density (particles per volume) of the plasma in the solar wind. When the solar wind from one of these events reaches the earth, the events are called Solar Storms or Magnetic Storms. These variations in the solar wind cause the location of the both the bow shock and the magnetopause vary. Studying the variation in the distance from the earth to the magnetopause is one of the aims of this lab.

The location of the magnetopause is important because the magnetosphere shields the earth and most satellites that go around the earth from the direct effects of the solar wind. When the magnetopause moves, some satellite that are typically protected by the magnetosphere can find themselves in the solar wind. In particular, many satellites are placed in geosynchronous orbits so that they are always above a fixed location on the earth. Geosynchronous orbits are roughly 42000 km (or  $6.6 R_E$ , where  $1 R_E$  equals the radius of the earth) from the center of the earth. During normal solar wind conditions the standoff distance of the magnetopause (the distance from the center of the earth to the point of the magnetopause that is on the line between the sun and the earth) is roughly  $10 R_E$ . During extremely strong Solar Storms the magnetopause can move in closer than geosynchronous orbit. This exposes many satellites to direct contact with extreme solar wind conditions, and satellites are often damaged or lost when this happens.

## 5.2 Theory

### 5.2.1 Magnetopause Location

The location of the magnetopause along the line between the earth and the sun can be derived by balancing the magnetic pressure of the magnetosphere with the dynamic pressure of the solar wind (see Figure 5.2). The equation for this balance takes the form:

$$r_o(R_E) = 107.4(n_{sw}v_{sw}^2)^{-\frac{1}{6}} \quad (5.1)$$

where  $r_o$  is the standoff distance from the earth to the magnetopause along the line to the sun measured in  $R_E$ ,  $n_{sw}$  is the number density of the plasma in the solar wind in  $\text{cm}^{-3}$ , and  $v_{sw}$  is the speed of the solar wind in km/s [Kivelson *et al.*, 1995, pages 173-4]. The entire magnetopause boundary has also been fit to various empirical functions by a number of researchers. We will use expressions from a set of models for the earth's magnetopause position for normal solar wind conditions [Shue *et al.*, 1997] and extreme events [Shue *et al.*, 1998]. The expressions we will use are

$$r = r_o \left( \frac{2}{1 + \cos \theta} \right)^\alpha \quad (5.2)$$

$$r_o = (10.22 + 1.29 \tanh [0.184(B_z + 8.14)])(D_p)^{\frac{-1}{6.6}} \quad (5.3)$$

$$\alpha = (0.58 - 0.007B_z)[1 + 0.024 \ln (D_p)] \quad (5.4)$$

where  $r$  is the distance from the earth to the magnetopause boundary,  $r_o$  is the magnetosphere standoff distance,  $B_z$  is the  $z$ -component of the solar wind's magnetic field,  $D_p$  is the dynamic pressure of the solar wind, and  $\alpha$  is the amount of tail flaring from the night side of the magnetopause.

### 5.2.2 Coordinate Systems

A variety of different coordinate systems are used to measure locations in space, and in this lab you will have to use data in several of these coordinate systems. More information on these coordinate systems can be found in books [Kivelson *et al.*, 1995] or online [ESA, 2005].

#### 5.2.2.1 Geocentric Solar Ecliptic

The geocentric solar ecliptic (GSE) coordinate system has its x-axis point from the earth to the sun and its y-axis is in the ecliptic plane (the plane of the earth's orbit) pointing in the direction of dusk (opposite the direction of the earth's orbital motion). Its z-axis is in the direction of the ecliptic pole.

#### 5.2.2.2 Geocentric Solar Magnetospheric

In geocentric solar magnetospheric (GSM) coordinates, as in GSE coordinates, the x-axis points from the earth to the sun. Its z-axis points in the direction of the north magnetic pole. Its y-axis, is perpendicular to the other two, so that a right-handed coordinate system results. The difference between the this system and the GSE system is a simple rotation about the x-axis.

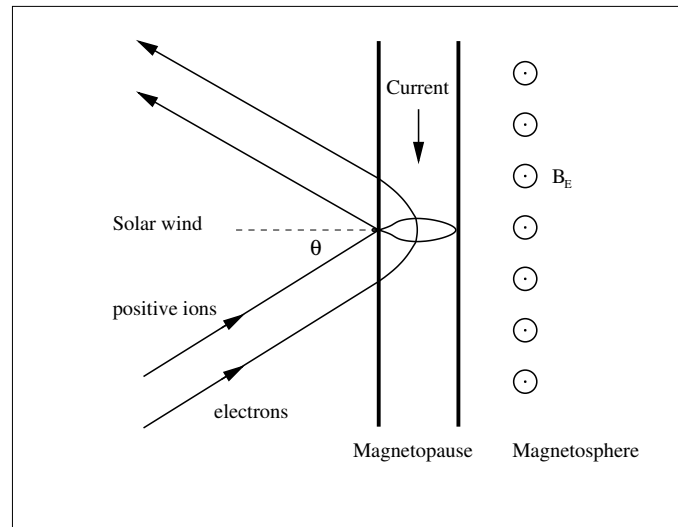


Figure 5.2: The pressure balance at the magnetopause between the solar wind dynamic pressure and Earth's magnetic pressure. The electrons deflect counter-clockwise and the positive ions deflect clockwise when reflecting at the magnetopause.

### 5.2.2.3 Geocentric Equatorial Inertial

In geocentric equatorial inertial (GEI) coordinates (also known as geocentric solar inertial (GCI)), the x-axis points from the earth to the the first point of Aries (the location of the sun at vernal equinox). This line is where the equatorial and ecliptic planes intersect. The z-axis is parallel to the earth's rotation axis, and the y-axis complete the the right-handed coordinate system.

## 5.3 Simulation

In this portion of the lab you will use a computer simulation to model the location of the magnetopause. The model we will use is called BATS-R-US [*Hansen et al.*, 2002], the Block-Adaptive-Tree-Solarwind-Roe-Upwind-Scheme, which was developed at the University of Michigan. We will be running the simulations on super-computers at NASA-Goddard run by the Community Coordinate Modeling Center (CCMC) [*NASA*, 2005].

This code is a magnetohydrodynamics (MHD) simulation. In MHD, a plasma is approximated as a quasi-neutral fluid, and that fluid is assumed to be governed by equations that are generalizations of the equations of fluid dynamics. MHD simulations ignore the behavior and physics of individual particles, and deal with the collective behavior of the plasma as a fluid. For this reason, MHD simulations work well on large scales, but miss much of the smaller scale physics.

### 5.3.1 BATS-R-US Input File

To use BATS-R-US, you must first create an input file which tells the simulation the type of conditions that you would like to simulate. The input file is a simple text file with the

Year	M	D	Hr	Mn	s	ms	$B_x$	$B_y$ nT	$B_z$	$V_x$	$V_y$ km/s	$V_z$	$n$ $\text{cm}^{-3}$	$T$ K
2000	1	1	0	0	0	0	5	0.0001	0.0001	-500	0	0	10	200000
2000	1	1	0	5	0	0	5	0.0001	0.0001	-500	0	0	10	200000
2000	1	1	0	10	0	0	5	0.0001	0.0001	-500	0	0	10	200000
2000	1	1	0	15	0	0	5	0.0001	0.0001	-500	0	0	10	200000
2000	1	1	0	20	0	0	5	0.0001	0.0001	-1000	0	0	10	200000
2000	1	1	0	25	0	0	5	0.0001	0.0001	-1000	0	0	10	200000
2000	1	1	0	30	0	0	5	0.0001	0.0001	-1000	0	0	10	200000
2000	1	1	0	35	0	0	5	0.0001	0.0001	-1200	0	0	10	200000
2000	1	1	0	40	0	0	5	0.0001	0.0001	-1200	0	0	10	200000
2000	1	1	0	45	0	0	5	0.0001	0.0001	-1200	0	0	10	200000

Table 5.1: Sample BATRUS input file segment

conditions at different times listed. A sample input file is available (`batrus_input_template.txt`) and Table 5.1 includes a portion of one.

First, note that the first two lines are a header line which should *not* be included when you try to run the simulation. Next, note that the first 7 columns of the input file set the time for the conditions that follow. Since we will not be simulating real conditions from a real day, the date we pick is arbitrary, though the usual convention is to pick 1/1/2000 for the date. The time differences are significant, though for our work here we will just use a 5 minute time difference between each of the points that we use. The next six columns give the three components of the solar wind magnetic field in nT, followed by the three components of the solar wind speed in km/s. Note that  $V_x$  must be negative, so that the solar wind is moving the earth and that the simulation adds the extra constraint that the magnitude of  $V_x$  must be 200 km/s or greater. Also note that the components of B must not be 0. The final two columns are the solar wind plasma number density in  $\text{cm}^{-3}$  and the solar wind plasma temperature in Kelvin.

In this lab you will complete one simulation run where you vary, in turn, two parameters. In one part of the run you will vary  $V_x$  and in the other part you will vary  $n$ . For each run you will compare the location of the subsolar point of the magnetopause to the location predicted by equation 5.1. Ask your instructor what specific range you should use for each. Note that because of the way the simulation interpolates the parameters between input lines that you will always want to have **consecutive lines** that have the **same** parameter values. If there are places where you have large jumps in input parameters (typically when you go from constant  $V_x$  to constant  $n$ ), you should have four lines in a row with the same values in order to give the simulation more time to settle down to an equilibrium. For most simulations, there will be two places where you need to do this - at the beginning of the simulation and in the middle. Before submitting your simulation, have your instructor check your input parameters.

Make sure to save your input parameters in your lab notebook. Include either your input txt file or the graph of conditions, or preferably both.

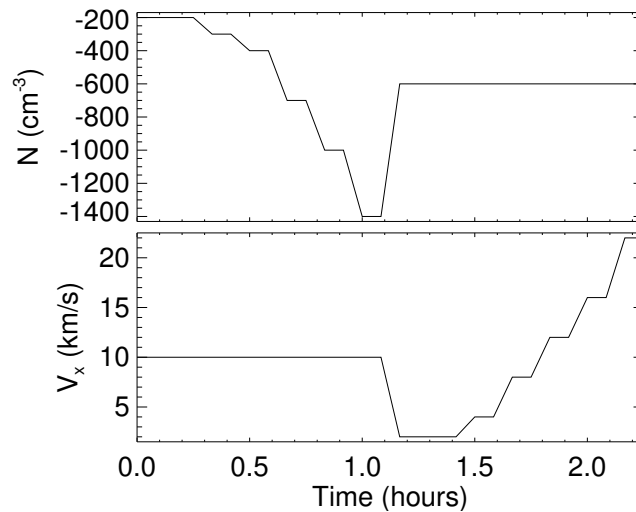


Figure 5.3: An excerpt of the interesting part of the solar wind conditions to input for the simulation. Note that in this case the solar wind number density (upper plot) is held constant for the first half and varied for the second half of the simulation, while the solar wind speed (lower plot) is held constant for the first half and varied for the second half of the simulation. Also note that the step pattern is used in the solar wind conditions to allow the magnetopause location to come to equilibrium after the conditions are varied.

### 5.3.2 Submitting Your BAT-R-US Simulation Run

As stated explained above, we will be running the BAT-R-US simulation using supercomputers at CCMC. This section describes how to submit your simulation run.

1. Go to <http://ccmc.gsfc.nasa.gov/>.
2. Click on “Request a Model Run” on the top.
3. In the “Magnetosphere” section, go to the “BATSRUS” line. Open “Magnetosphere run instructions” link in a new browser tab or window. Then click on the “Request a Run” link as well.
4. Fill in all required areas about yourself. Pick a title for your run — something like “Magnetopause location under various solar wind conditions” and add the key word “educational” to the appropriate boxes. Choose “BATSRUS version 20140611: without RCM and without RBE” for the simulation.
5. Also choose “Run Type: Model” and fill in the ending time for your simulation i( the length of your run) and then hit the “Submit” button
6. On the next page, under “Solar Wind Input”, click “Upload file” button and then click browse to find the file in your directories. Making sure that you input data looks like the data above, except that your file should have with no header lines at the top. Hit the “Browse” button to find the file. After you have found your file, also input a value for the “Fixed X Component of SW Magnetic Field” — that value will be 5.

7. Under “Magnetosphere Grid”, leave the simulation grid at 1,007,616 cells. Under “Ionosphere Conductance Model:” leave the value in the “Auroral Conductances driven by solar irradiance and field-aligned electric currents F10.7 parameter:” box at a value of 150. Also, “No Dipole Update” and a “dipole tilt” of 0. Then click submit.
8. Under “Step 6”, set the “Output Frequency” to 300 and press the “Continue” button. Hit “Continue Submission” on the next screen as well.

Once you have submitted the job, you will be sent an email confirmation. After your run is complete, another email will be sent to you.

### 5.3.3 Viewing Your Results

After your simulation run has been completed, you can use the online tools to view the results of your run. To get to these tools, hit the “View Model Run Results” link from the main CCMC page. The click Global Magnetosphere Models Results. Find your run either by searching for your name or by browsing through the list of results, then click the link. Then click the link to “View Magnetosphere.” This will bring you to a complicated web form which you can use to view your results. The simulation results can be viewed in many different ways, though we will only use a few of them.

#### 5.3.3.1 Making a Movie of your Results

First you should use the web form to make an animated movie of your results. To do this choose “Create GIF movie with current plot settings” near the top of the screen. Then just below that set the start and end time of your movie to the start and end time of your simulation run and add your email address. Then you need to choose the type of plot to use for the movie — for this first movie, just use the default choices of “ColorContour2D” and “N” (number density). Near the bottom, choose a plot range of  $X=(-80, 25)$ , and  $Z=(-48, 48)$ . Choose Y to be the cut plane with a value of  $y=0$ . Then hit the “Update Plot” button and a short time later you will receive a link to your movie.

You should also try an animated gif with plot type “Contour (2D)” and clicking the “Show magnetic topology” checkbox.

Save copies of your movies in your home directories and email copies of them to your instructor. Print one frame from each movie on a color printer, and include it in your lab notebook. Describe what you see in the movies in your lab notebook.

#### 5.3.3.2 Finding Subsolar Magnetopause Location — Simulation Estimates

The simulation can determine the magnetopause location for you. To use these functions, go back to the page where you chose “View Magnetosphere” and now choose “View Magnetopause standoff and closest approach within 30 deg. of Sun-Earth line (local noon).”

For this plot type, choose to plot your whole time range (which will probably be set automatically). Also, choose to display all three data types that are possible on this plot: “mpnose”, “rmin”, and “lt\_at\_rmin”. Take the uncertainty in all of the applied distances to be  $0.1 R_E$ . The one of these that you will be most interested in is “mpnose” which is the distance from the center of the earth to the subsolar point of the magnetopause. Save a copy of this plot. Also click the option at the bottom to save the data to a text file, and be sure to **save** the text file.

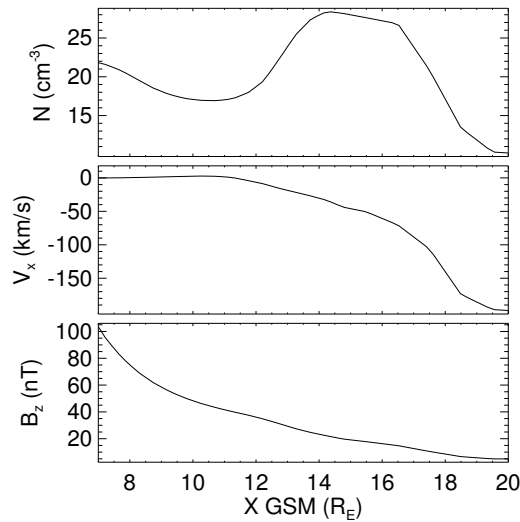


Figure 5.4: Simulation results plot used to find subsolar point of the magnetopause. The data are from five minutes into a typical simulation run and they are plotted along the line from the Earth to the Sun. The top panel shows the number density, the middle panel shows the x-component of the plasma flow velocity, and the bottom panel shows z-component of the magnetic field. Geocentric solar magnetospheric (GSM) coordinates are used here.

### 5.3.3.3 Finding Subsolar Magnetopause Location —Your Interpretations

First you want to choose which time point of your simulation to look at under the “Choose data time” option. If you used the data input scheme suggested above where the input parameters are constant for several times in a row, then you will want to look at the *last* time for each set of parameters. In order to find the subsolar point of the magnetopause, it is easiest to look at a line plot of various plasma parameters, so choose “Plot Mode” of “Line Plot.” Since the subsolar point is on the x-axis, choose “Y<sub>1</sub>”, “Y<sub>2</sub>”, “Z<sub>1</sub>”, “Z<sub>2</sub>” all equal to 0 under the “Choose Plot Area” section at the bottom of the screen. For the x-limits you will want to start out with a range that is sure to include your magnetopause, and then zoom in once you have found the subsolar point of the magnetopause. In order to determine your magnetopause, you should take a look at several of the following data quantities:  $V_x$ ,  $B$ ,  $B_x$ ,  $B_y$ ,  $B_z$ , and  $n$ . Figure 5.4 is an example of the sort of plot that you will want to make.

The magnetopause boundary should be roughly visible in your plots as the location where the plasma parameters are changing rapidly from the solar wind values which you input, to the magnetosphere values. Recall, though there are two boundaries near each other in this region. The bow shock, which separates the solar wind from the magnetosheath and the magnetopause which separates the magnetosheath from the magnetosphere. The key point to remember when searching for the magnetopause location, is that the magnetopause defines the outer boundary of the region where the earth’s magnetic field dominates.

In Figure 5.4, the magnetopause is located at roughly 11  $R_E$ . In the number density plot, the bump in the number density corresponds to the buildup of plasma in the magnetosheath, so the inner boundary of that bump corresponds to the magnetopause. In the plot of the



x-component of the velocity, the magnetopause is seen as the location where the value goes to 0, since the plasma from the solar wind is diverted around the magnetosphere at the magnetopause. Finally, in the plot of the z-component of the magnetic field, there is an almost imperceptible shift at  $11 R_E$ . So in this case, counter-intuitively, it is easier to find the magnetopause in the plasma results for the the simulation than in the magnetic field results.

Come up with your own standard to decide where the magnetopause is and make sure that you use more than one parameter in making your decision. Note that the point where two lines representing different quantities cross has no physical significance. Based on your standard, you should assign a value for the uncertainty of the location of the subsolar point based on how precisely you can determine the locations from your plots. Be sure to save the plots that you use for finding the subsolar point to a file. You should include copies of these plots in your lab notebook. Note that if you defined your input parameters as suggested, then you only need to find the magnetopause location for the last time for each of the sets of input parameters that have the same parameter values.

#### 5.3.3.4 Fits

The distance from the earth to is magnetopause is given roughly by the equation 5.1. This equation makes the assumption that the solar wind for a typical momentum flux of 2.6 nPa ( $nv^2$ ) leads to a magnetopause location at about  $10R_E$  [Kivelson *et al.*, 1995, p. 171]. This is only a general prediction of the location of the magnetopause. Plot your two sets of estimates of the magnetopause location. From your results find your empirical constant factor (similar 107.4) for both of your sets of estimates of the magnetopause location. To do this you will need to fit your data to equation 5.1. You should come up with four fits to this equation: one for each section of your input data (constant V and constant n for the solar wind) for each estimate of the magnetopause location [your estimates (Section 5.3.3.3 and the simulation's estimates (Section 5.3.3.2)].

#### 5.3.4 Questions

1. Watch the movie that you made of your simulation results again and compare the behavior of the magnetopause to your input solar wind conditions. Describe what happens to the magnetosphere as the solar wind conditions vary. Pay particular attention to what happens when there are large changes in the solar wind conditions. How quickly do changes in the magnetosphere propagate from one end of the magnetosphere to the other?
2. Compare your two sets of estimates of the magnetopause location. Do they agree within uncertainties? Are there systematic differences between the two? If so, attempt to explain why.
3. How do those values compare to each other and to 107.4?
4. What are some possible reasons why in the BATRUS model the value for the magnetopause constant (107.4) changes? What approximations are being made when dealing with MHD in space?

## 5.4 Spacecraft Data

For this part of the lab, you will be examining what spacecraft observations of the magnetosphere tell us about the behavior of the magnetopause under extreme solar wind conditions and how those results compare to the magnetopause models already mentioned. You will use solar wind data to predict where the magnetopause is in the vicinity of a number of satellites and you will check to see if the data from those spacecraft show the spacecraft crossing the magnetopause at the predicted times.

Three specific extreme solar wind events will be examined: October 31 2003, July 15 2000 (Bastille Day storm), and May 4, 1998. For each event the solar wind data was collected from the Advanced Composition Explorer (ACE) satellite from [cdaweb.gsfc.nasa.gov](http://cdaweb.gsfc.nasa.gov). ACE resides at about  $210 R_E$  from the earth on the line between the earth and the sun. On board ACE is an array of instruments to measure the solar wind. Solar wind plasma data (SWEPAM) and magnetic field data (MAG) are the two instruments that we will be using data from. The SWEPAM instrument takes the solar wind velocity, ion density, and ion temperature, while MAG takes the magnetic field intensity.

Along with ACE data, we will be using data from several other satellites. These satellites are of several different classes. The GOES satellites are weather satellites and the data that they take that is of interest to us is magnetic field data (MAG) and energetic particle data (EP). The L satellites are run by Los Alamos National lab and contain plasma data, low and high energy ions as well as electron number densities. All GOES and L satellites are in geosynchronous orbit. We will also be using data from two NASA satellites with more interesting orbits — Geotail and Polar. Geotail has ion number density and speed data (CPI), and magnetic field data (MGF) that we will be using. Polar has magnetic field (MFE) data that we will be using. During the events listed above these satellites spend at least some time inside the magnetosphere. The point of this lab is to check the satellite data for signs of having crossed the magnetopause and compare that to predictions of equation 5.2.

### 5.4.1 Procedure

For each event the earth's magnetopause location has already been calculated using equation 5.2 based on ACE data which is also included in the spreadsheet. The position of the magnetopause along with the location of a particular satellite. These results are included in spreadsheet files which have been stored under the data directory on the course web site. These spreadsheets can be read using the “*gnnumeric*” program. The predicted magnetopause location and the satellite's distance from the earth have also been saved into text files ending with “.txt”, but are otherwise named the same as the spreadsheets. You will need to use these text files to create your own plots of the predicted magnetopause crossings. Along with the spreadsheet files are data files which you will want to compare to the magnetopause location data. These files contain either magnetic field data, ion number density data, or particle flux data. The data files that you will want to use all end in “\_nt.txt”.

1. Magnetic field data contains MAG, MFE, or MFG in the file (G0\_K0\_MAG\_65544.txt) the *txt* is the actual data and the *.gif* is a graph of the data.
2. Ion data should be in a MPA (L1\_K0\_MPA\_65778.txt) file from which you want the “low P DENS” info. Or it will be an EP# (G0\_K0\_EP8\_225752.txt) file where a large flux usually means a transfer between barriers.

Figure 5.5 shows an example of the type of analysis you will be doing with this data, though you do not have to try to get all of the data on one plot. To make your plots, you can use the `iplot` feature of a program called *idl*. Directions on how to use this program are in the file `iplot_tutorial.txt`.

Depending on the data that you are using, it may be easiest to have one plot with the spacecraft data open and another plot showing the spacecraft position as well as the predicted position of the magnetopause. If you have the same time scale on each plot, then you can compare the features on each plot to determine whether the data supports the idea of having magnetopause crossings where they are predicted by the other plot.

The example data in Figure 5.5 shows Geotail data from October 31, 2003. On that day a large CME hit Earth, causing auroras that were visible throughout much of the United States.

The top panel of Figure 5.5 predicts several magnetopause crossings, but the most notable crossings are at roughly 5:00, 10:00, and 11:00. From 1:30–5:00 and from roughly 10:00–11:00, Geotail is predicted to be inside the magnetosphere. In other words, at those times Figure 5.5 shows the magnetopause further from the Earth than the spacecraft is. For most of the rest of that day Geotail was inside the magnetosphere. The data in the middle and bottom panels of Figure 5.5 shows the crossing from inside to outside the magnetosphere at 11:00 and the data also shows other magnetopause crossings, though as described below the crossings seen in the data differ a bit from the predictions. Note that the prediction of the magnetopause location is based on solar wind data from outside the magnetosphere. The time it takes the solar wind to get to the spacecraft from the place at which it is measured varies, but it typically about 15 minutes. So we should expect to see magnetopause crossings slightly earlier in the predictions than in the data.

The middle panel of Figure 5.5, which shows the ion flow velocity measured by Geotail and the x-component of the solar wind speed measured by ACE, has three visible regimes. During this day the x-component of the solar wind velocity slowly changes from  $-1200$  km/s to  $-800$  km/s. From 0:00–5:00 most of the Geotail ion flow velocity data is missing. From 5:00–11:00 the three components of the ion flow velocity measured by Geotail oscillate near values of  $-700$  km/s,  $-400$  km/s, and  $200$  km/s respectively. While from 11:00–24:00 the y- and z-components oscillate near  $0$  km/s, and the x-component is based at roughly  $-1000$  km/s, with spikes up to almost  $0$  km/s. The behavior of the x-component during this last time period can be interpreted as being due to the spacecraft being just outside the magnetopause in the magnetosheath. When the x-component is near  $-1000$  km/s it matches the solar wind speed, suggesting that Geotail is outside the magnetopause at those times. The noisiness of these measurements of the ion speed in the magnetosheath is likely due to reflection of the solar wind ions off the magnetopause and the movement of the magnetopause as the solar wind conditions vary.

The velocity measurements act much differently from 5:00–11:00, suggesting that the spacecraft is inside the magnetosphere during those times. Notice that during this time there are several short time periods where all components of the data have spike which match their magnetosheath values. This suggests that during this time period the spacecraft is near the magnetopause boundary and that fluctuations in the solar wind cause the magnetopause to oscillate back and forth across Geotail's position.

The third panel, showing Geotail's magnetic field measurements, has similar regions of behavior. From 0:00–11:00 all three components have spiky measurements which trend down-

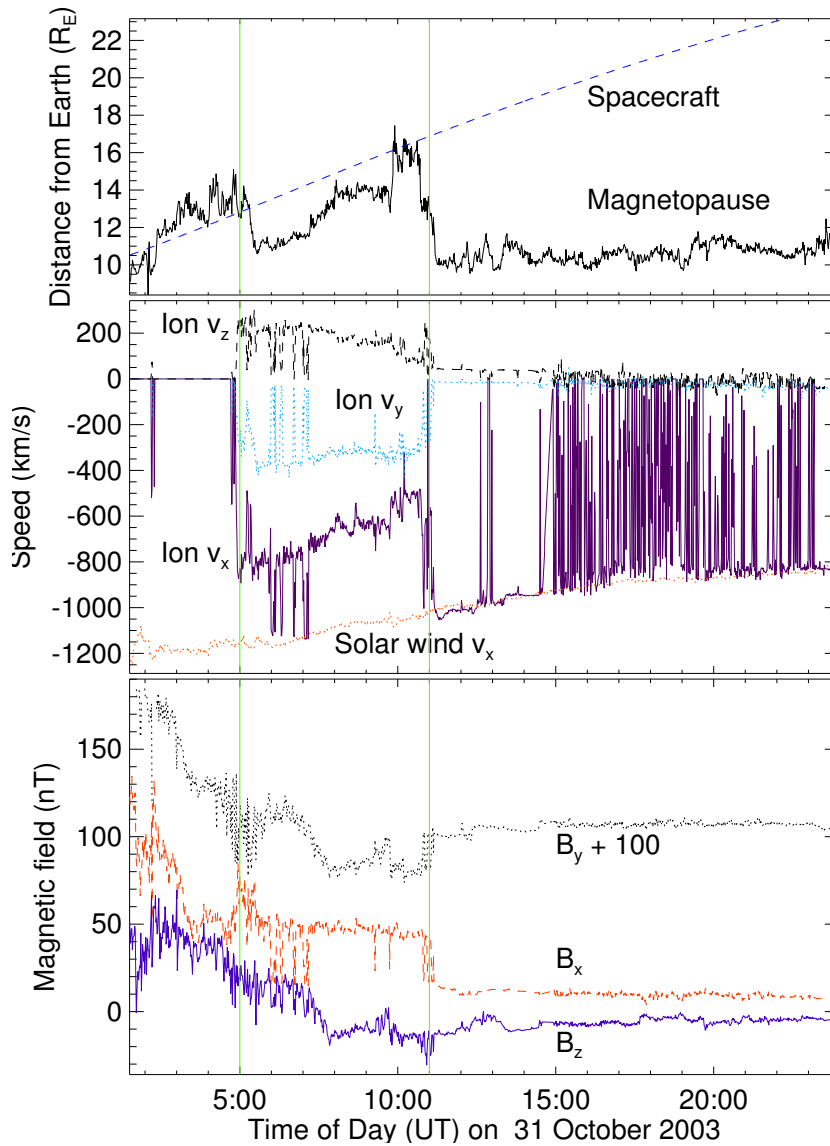


Figure 5.5: Plots showing Geotail’s magnetopause crossings on 31 October 2003 (color on-line). The top panel shows the Geotail spacecraft’s distance from Earth and the predicted location of the magnetopause along the line from the Earth to Geotail based on the ACE spacecraft measurements of solar wind conditions. The second panel shows Geotail’s measurements of the ion flow velocity and the x-component of the solar wind speed measured by ACE, all in geocentric solar ecliptic (GSE) coordinates. The third panel shows Geotail measurements of the three components of the magnetic field in GSE coordinates. The bottom plot shows the ion number density measurement by Geotail.

ward. The downward trend is due to the decreasing magnitude of the Earth's dipole field as Geotail gets further from Earth, while the spikes are due to disturbances in the plasma in the magnetosphere during this magnetic storm. From 11:00–24:00, the three components are steadier and oscillate near 10 nT, 5 nT, and  $-10$  nT, respectively. During this time Geotail is in the magnetosheath where the solar wind magnetic field dominates. Note that during several of the spikes in the magnetic field which occur between 0:00 and 11:00, that the magnetic field matches the magnetosheath values. This supports the idea that the magnetopause oscillated back and forth past the spacecraft, as was mentioned with the ion velocity data.

The number density plot shows similar behavior. There is a large spike in the number density just after 5. That peak slowly decays until about 10, after which there are several smaller peaks. Once again, this plot shows Geotail inside the magnetopause from roughly 5-10, and in the magnetosheath afterwards.

For the cases you will look at, for each satellite there is some sort of data you should examine to try to confirm the location of the magnetopause. In some cases the satellite never crosses the theoretical magnetopause, but you need to check that the data shows the same thing. When examining the satellite data, pay particular attention to the times at which the theoretical magnetopause location plot shows the satellite crossing the magnetopause. Note any signs of a magnetopause crossing. Based on your examination of the data and the theoretical magnetopause location, determine if you believe the satellite crossed the magnetopause and if so at what time[s].

**\*\*\*Be sure to analyze potential magnetopause crossings in each set of data before going on to the questions.\*\*\*** As part of that analysis, you should describe whether each data plot supports any potential crossings that you see in the spacecraft position / predicted magnetopause position plot. It is a good practice to write that analysis on the page you taped made the plot, or on the facing page.

Listed below are the events and the data that we have available for them. Your instructor will tell you which events you should look at.

Event	May 4, 1998	July 15, 2000	October 31, 2003
Satellites	GOES 9	GOES 8	Geotail
	L4	GOES 10	GOES 10
	L7	L1	GOES 12
	Polar	L4	L0
		L9	L1
			L4
			L7

### 5.4.2 Questions

1. For which satellite and event pairs did you find magnetopause crossings? How strong do you believe the evidence is for a crossing in this case?
2. In any of your events does it appear that the satellite crossed the magnetopause repeatedly? If so, does it seem as though magnetopause is moving back and forth over the satellite? What could explain this type of behavior?
3. Which data did you find easier to interpret - ion or magnetic field ? Why?

4. Which spacecraft data did you find easier to interpret? Why? Do you think that this is a result of the behavior of a specific event? Or of the satellite's position during that event?
5. In any of these cases does the data show the magnetopause crossing geosynchronous orbit?

### 5.4.3 Conclusion

For this experiment (and the others) you should add a conclusion discussing and critiquing the lab and your results.

## 5.5 Acknowledgments

Simulation results have been provided by the Community Coordinated Modeling Center at Goddard Space Flight Center through their public Runs on Request system. The CCMC is a multi-agency partnership between NASA, AFMC, AFOSR, AFRL, AFWA, NOAA, NSF and ONR. The BAT-R-US Model was developed by Tamas Gombosi et al. at the Center for Space Environment Modeling at the University of Michigan. Spacecraft key parameter data provided by CDAWeb. Solar wind data shown here is from ACE SWEFAM provided by D. J. McComas from SWRI and ACE MFI provided by N. Ness from Bartol Research Institute. Data shown here from Geotail MGF provided by S. Kokubun at STE-LAB, Nagoya University, and Geotail CPI provided by L. Frank at University of Iowa. GOES 8, 9,10, and 12 data provided by T. Onsager and H. Singer from NOAA. L1, L4, L7, and L9 data shown here was provided by provided by E. Dors, M. Thomsen, and D. McComas from LANL. GOES 8, 9,10, and 12 data shown here was provided by T. Onsager and H. Singer from NOAA. Polar data shown here was provided by C. Russell (UCLA), D Gurnett (U. Iowa) and W.K. Peterson (LASP/University of Colorado).

## 5.6 Bibliography

ESA, Coordinate systems and transformations, <http://www.spennis.oma.be/spennis/help/background/coortran/coortran.html>, 2005.

Hansen, K., G. Tóth, A. Ridley, and D. DeZeeuw, *BATS-R-US User Manual: Code Version 7.5.0*, <http://csem.engin.umich.edu/docs/HTML/USERMANUAL/USERMANUAL.html>, 2002.

Kivelson, A., M. G. Kivelson, and C. T. Russell, *Introduction to Space Physics*, Cambridge University Press, London, 1995.

NASA, <http://ccmc.gsfc.nasa.gov/>, 2005.

Shue, J.-H., J. K. Chao, H. C. Fu, C. T. Russell, P. Song, K. K. Khurana, and H. J. Singer, A new functional form to study the solar wind control of the magnetopause size and shape, *J. Geophys. Res.*, 102(a5), 9497–9512, 1997.

Shue, J.-H., et al., Magnetopause location under extreme solar wind conditions, *J. Geophys. Res.*, 103(A8), 17,691–17,700, 1998.

# Speed of Sound Lab

I believe the use of noise to make music will increase until we reach a music produced through the aid of electrical instruments which will make available for musical purposes any and all sounds that can be heard.

composer John Cage, 1937

## 6.1 Introduction

There are many ways to determine the speed of sound. The method we will use in this lab is both fairly straight forward and the equipment needed is fairly minimal. We will be creating sounds and recording them with two microphones. We will measure the difference in distance between the paths the sounds take from going to the two microphones. We will then study the recorded signals of the sound to see the time difference between how long the sound took to get to each microphone. Our measurement of the speed of sound will be the result of dividing the difference in distance by the difference in time.

### 6.1.1 Theory

Sound is a vibrational wave that travels through a medium. The speed of sound in a medium depends on how quickly the energy of the vibration can be transferred across the medium. While the details of the equations that are used to find the speed of sound will vary depending on the state of the medium, the basic equation

$$\frac{\partial^2 u}{\partial t^2} = c^2 \nabla^2 u \quad (6.1)$$

describes the wave where  $u$  describes the medium the wave is moving through, and  $c$  is the speed of the wave [*Hecht and Zajac*, 1987].

In a sound wave, the general method to find the speed is from

$$v_s = \sqrt{\frac{\partial p}{\partial \rho}} \quad (6.2)$$

where  $p$  is the pressure and  $\rho$  is the mass density [*Landau and Lifshitz*, 1993]. In fluids, the speed can be recast in terms of the bulk modulus,  $B$ ,

$$v_s = \sqrt{\frac{B}{\rho}} \quad (6.3)$$

which describes the change in volume undergone by a medium when the pressure changes [Halliday et al., 2001]. Similarly, in a solid the sound speed depends on the Young's modulus,  $Y$ ,

$$v_s = \sqrt{\frac{Y}{\rho}} \quad (6.4)$$

which describes the stress divided by the strain.

For gases, the bulk modulus is not always easy deal with, since it will in general vary with temperature, pressure, and density. So the speed of sound equation is often recast using the terms of ideal gases:

$$v_s = \sqrt{\frac{\gamma k T}{m}} \quad (6.5)$$

where  $\gamma$  is adiabatic index (which is equivalent to the specific heat at constant pressure divided by the specific heat at constant volume),  $k$  is Boltzmann's constant,  $T$  is the temperature and  $m$  is the molecular mass [Landau and Lifshitz, 1993]. For dry air we will take  $\gamma = 1.4$  and  $m = 28.9645$  u. Unfortunately, air is not a perfectly ideal gas, so to determine the speed of sound more exactly pressure and humidity must be considered. Consideration of these effects does not lead to simple equations, though, so in practice tables or numerical approximations are typically used.

## 6.2 Procedure

### 6.2.1 The Speed of Sound in Air

In this lab we will be using the program **audacity** on a Linux computer to record sounds received by two microphones. Using the provided adapters you will save one microphones sound as the left track of a stereo recording and one as the right track. For all of the measurements that you make below, be sure to establish reasonable uncertainties and to make notes in your lab notebook about why you picked the uncertainties that you used.

Record the air temperature, pressure and humidity for the time of your measurements. Currently we have 1 device that will make all three measurements.

Your first order of business is to figure out how you need to use the provided adapters and cords to hook up the microphones to the computer. Once you believe that you have the cords set up right, open up audacity and configure that program to receive stereo input. Then test each microphone separately, to be sure that they are providing signals to the correct channel. Once you are convinced that each microphone is working correctly, try both microphones at the same time. Play with causing a sound closer to one microphone or the other and see if your recorded signals make sense.

Once you are convinced that your setup is correctly recording the signals to both microphones, take several sets of data that you can use to find the speed of sound. Remember that the distance that will go into your calculations is the *difference* in the path length traveled by the sound to each microphone.

For the time difference between how long it takes the sounds to get to each microphone, first use **audacity** directly. Zoom in on your recordings, pick notable locations in the sound waves, and read off the time difference between when those portions of the wave appear in the left and the right channels. Be sure to assign an uncertainty to the time difference. Be



sure to be print off at least one set of sample signals from audacity and use the plots when explaining your method. You may need to create a screenshot in order to extract plots from audacity.

Mathematica can be used to increase the precision of your measurements of the time delays. A file called `sound_analysis.nb` shows examples using some of the commands below.

You should save your files as `.wav` files from audacity, using Export.

Then open them in Mathematica using:

```
sdata= Import["filename", "Data"]
c1 = sdata[[{1}]]
c2= sdata[[{2}]]
ListPlot[c2, PlotRange -> {{1500, 1550}, {-.1, .2}}]
```

Repeat this process for at least five different path length differences for the sound's travel to the two microphones. Be sure to have your path difference use the entire range of possible values allowed by the supplied equipment. Plot your results as path length difference versus time delay and fit the line to find a value for the speed of sound in air.

## 6.2.2 The Speed of Sound in Some Other Material

In this section of the lab you are in charge. Use the techniques that you learned in the previous section to find the speed of sound in some material other than air. In your lab notebook describe in detail what you do on this portion. Note that you should be very careful to consider the fact that the sound may travel both through the material that you are attempting to test and the air. Think carefully how to best use the equipment available to measure the speed of sound in the material.

## 6.3 Conclusions

1. Find online or in a book a source for the speed of sound in air that considers temperature, humidity, and pressure. This source may have equations, tables, or web forms that give the speed of sound. Cite your source. Find the speed of sound using equation 6.5 and your source and compare. Also, try slightly varying the temperature, pressure, and humidity that you use and see how the results change. Variations in which parameters make the most difference here? Why? Use these values to come up with a theoretical value of the speed of sound in air with uncertainty for the time of your measurements. Explain how you decided on your value.
2. How do your results for the speed of sound in air compare to the published values? Are the values consistent to within their uncertainties?
3. What is the published value for the speed of sound in the other material that you tested and what is your source for the speed? ([http://www.engineeringtoolbox.com/sound-speed-solids-d\\_713.html](http://www.engineeringtoolbox.com/sound-speed-solids-d_713.html) and <http://piano-tuners.org/sound.html> have some values.)

How do your results compare to the published values? Are the values consistent to within their uncertainties?

4. How could this lab be improved to increase the precision and accuracy of the measurements of the speed of sound for air or for other materials?

## 6.4 Bibliography

Halliday, D., R. Resnick, and J. Walker, *Fundamentals of Physics*, sixth ed., Wiley, 2001.

Hecht, E., and A. Zajac, *Optics*, second ed., Addison-Wesley, 1987.

Landau, L. D., and E. M. Lifshitz, *Fluid Mechanics*, second ed., Pergamon Press, 1993.

# Torsion Pendulum Lab

Life swings like a pendulum backward and forward between pain and boredom.

Arthur Schopenhauer

## 7.1 Introduction

Oscillations show up throughout physics. From simple spring systems in mechanics to atomic bonds in quantum physics to bridges blowing the wind, physical systems often act like oscillators when they are displaced from stable equilibria.

In this experiment you will observe the behavior of a simple sort of oscillator: the torsion pendulum. In general a torsion pendulum is an object that has oscillations which are due to rotations about some axis through the object. This apparatus allows for exploring both damped oscillations and forced oscillations.

## 7.2 Theory

Note that angular frequency ( $\omega$  in rad/s) and frequency ( $f$  in Hz.) are not the same. Most the equations below concern  $\omega$ , in many cases it is easier to measure  $f$ .

In the damped case, the torque balance for the torsion pendulum yields the differential equation:

$$J \frac{d^2\theta}{dt^2} + b \frac{d\theta}{dt} + c\theta = 0 \quad (7.1)$$

where  $J$  is the moment of inertia of the pendulum,  $b$  is the damping coefficient,  $c$  is the restoring torque constant, and  $\theta$  is the angle of rotation [*Leybold Scientific*, 2006a]. This equation can be rewritten in the standard form [*Thornton and Marion*, 2004]:

$$\ddot{\theta} + 2\beta\dot{\theta} + \omega_0^2\theta = 0, \quad (7.2)$$

where the damping constant is  $\beta = \frac{b}{2J}$  and the natural frequency is  $\omega_0 = \sqrt{\frac{c}{J}}$ . The general solution to this differential equations is:

$$\theta(t) = e^{-\beta t} \left[ A_1 e^{\sqrt{\beta^2 - \omega_0^2} t} + A_2 e^{-\sqrt{\beta^2 - \omega_0^2} t} \right], \quad (7.3)$$

with three different types of solutions possible depending on the relationships between  $\omega_0$  and  $\beta$ .

In the underdamped case ( $\beta < \omega_0$ ):

$$\theta(t) = \theta_0 e^{-\beta t} \cos(\omega_1 t - \gamma) \quad (7.4)$$

with the oscillation frequency  $\omega_1 = \sqrt{\omega_0^2 - \beta^2}$ , initial amplitude  $\theta_0$ , and phase  $\gamma$ .

In the critically damped case ( $\beta = \omega_0$ ):

$$\theta(t) = (A + Bt)e^{-\beta t}. \quad (7.5)$$

In the overdamped case ( $\beta > \omega_0$ ):

$$\theta(t) = e^{-\beta t} [A_1 e^{\omega_2 t} + A_2 e^{-\omega_2 t}], \quad (7.6)$$

where  $\omega_2 = \sqrt{\beta^2 - \omega_0^2}$ .

For the forced oscillation case, an external torque is added to Equation 7.1:

$$J \frac{d^2\theta}{dt^2} + b \frac{d\theta}{dt} + c\theta = \tau_0 \sin(\omega t), \quad (7.7)$$

where  $\omega$  is the driving frequency and  $\tau_0$  is the driving torque [*Leybold Scientific*, 2006b]. The general solution to the differential equation is the sum of the homogeneous solutions (which are the solutions to the damped case above) plus a particular solution. The particular solution has the form:

$$\theta(t) = \theta_m(\omega) \sin(\omega t - \phi) \quad (7.8)$$

with

$$\theta_m(\omega) = \frac{\tau_0}{J \sqrt{(\omega_0^2 - \omega^2)^2 + (b\omega/J)^2}} \quad (7.9)$$

In this case the resonance frequency is  $\omega_r = \sqrt{\omega_0^2 + 2\beta^2}$  and the phase shift between the pendulum and the external oscillator is:

$$\tan \phi = \frac{2\beta\omega}{\omega_0^2 - \omega^2} \quad (7.10)$$

## 7.3 Equipment

In this experiment you will use the torsion pendulum, the power supply for the driving motor, a low voltage power supply for the eddy current damper, two digital multimeters, and a stop watch.

Figure 7.1 shows the torsion pendulum and associated electronics. The motor which is used to force the pendulum (which will only be used in the second half of the experiment) is shown on the left of the diagram. The eddy current damping device is shown on the bottom of the diagram.

### 7.3.1 Notes on the Torsion Pendulum

- Do not forget to consider uncertainties in your measurements and calculations.
- Do not allow the current through the eddy current damper to exceed 2 A.

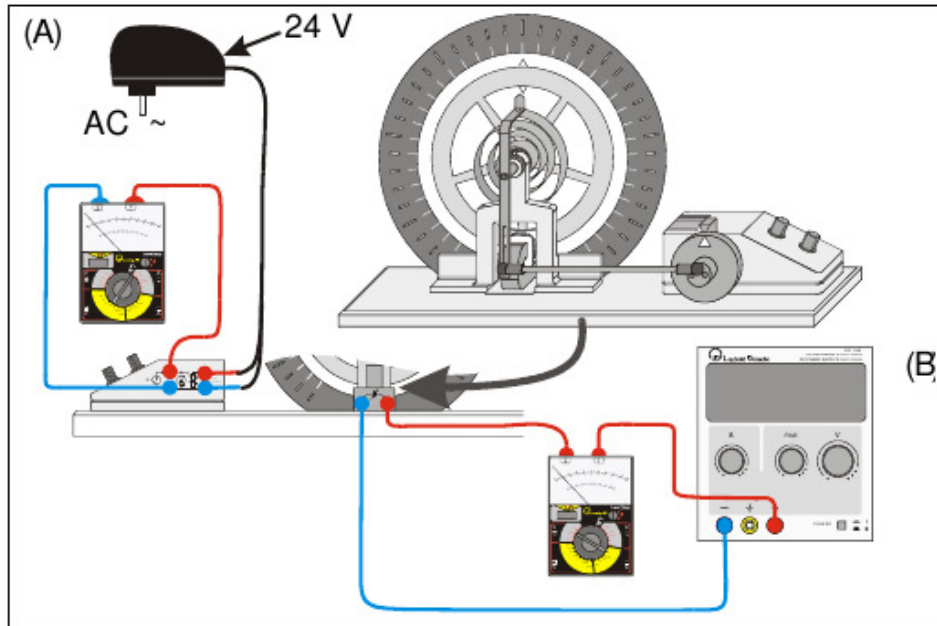


Figure 7.1: A schematic of the torsion pendulum apparatus [Leybold Scientific, 2006b].

- Do not leave the current above 1 A for very long.
- The units on for the angle on the pendulum are not standard. Make up a name for the units and stick with it.
- Take the moment of inertia,  $J$ , of the torsion pendulum to be  $3.0 \pm 0.1 \text{ kg} \cdot \text{m}^2$ .

## 7.4 Data collection

The instructions below assume that you will collect data by eye, but you can also use video capture to collect the data. The torsion pendulum data can also be taken by video capture, either using the camera attached to the Raspberry Pi in PE 132, or with your own cell phone. Then the files can be analyzed using Tracker (<https://www.cabrillo.edu/~dbrown/tracker/>).

### 7.4.1 Video collection with Raspberry Pi camera

Set up the pendulum with a white background behind it, and light it well. Log into the Raspberry Pi, and run the video capture software using a command like the one below:

```
raspivid -w 640 -h 480 -fps 5 -t 10000 -o pend_jc1.h264
```

The command is `raspivid`, the `-w` and `-h` options set the width and height of the video, the `-fps` sets the frame rate in frame per second, `-t` sets the length of the video in microseconds, and `-o` sets the name of the output h264 video file.

After creating the video files, you can transfer them to the Linux computer yalow, by copying them to `/var/yalow`. Once copied there, they will show up on yalow under `/backup`.

From there, you will need to change the files into mp4 format, so that Tracker can use them:

```
avconv -i pend_jc1.h264 -c copy -r 5 pend_jc1.mp4
```

This command changes the h264 file into an mp4 file, which tracker can deal with. The command `avconv` can do fancier things like change the frame rate or size of the image as well. (A similar command called `ffmpeg` is available on the regular Linux computers.)

## Tracker

Tracker is currently just installed on yalow. To run it log into yalow from the console, or remotely using `ssh`:

```
ssh -Y physics@yalow
```

Then either find Tracker in the menu, or from a terminal type:

```
/opt/tracker/tracker.sh
```

To use Tracker, you can use the fine documentation under Help, particularly Getting Started. Here's an even briefer overview:

1. Open your `.mp4` video file - other types may work, but not h264.
2. Set the origin. Click on the tool that looks like axes and drag the axes to the center of that axis of pendulum.
3. Click Create —Point mass - to pick the tool to follow the pendulum pointer.
4. Shift-click on point on pendulum pointer. Each Shift click advances one frame. These clicks digitize the location of the pendulum pointer. The data shows up on the plot.
5. You can display other quantities on your data table by clicking Table and choosing the quantities.
6. You should save your data as a Tracker (`.trk`) file.
7. Also, save your data as a `.txt` file for use elsewhere - File—Export—date file .

## 7.5 Procedure

### 7.5.1 Damped Oscillations

First, setup the torsion pendulum apparatus, with the forcing motor turned off and play with it to get an idea of how it works [*Leybold Scientific*, 2006a].

#### 7.5.1.1 Nearly Free Motion

With damping magnet turned off, find the natural frequency by measuring the period of the torsion pendulum. You will probably get better results if you use the time it takes the pendulum to oscillate 10 or 20 times to find the period. Note that even with the current off, friction does cause some damping of the pendulum. So the motion is not quite simple harmonic motion.

### 7.5.1.2 Damping Constant

Pick a small value of the damping current ( $0.1 \text{ A} < I < 0.3 \text{ A}$ ) and determine the damping constant. To do this first measure the period several times. Then start the pendulum from its furthest rotation point and measure  $\theta_{max}$  after each period. If you have difficulty taking the  $\theta_{max}$  measurements, you may need to try again. If using video capture, you can just take one long video at a given damping current, and collect all of the needed information from that video.

Plot  $\phi_{max}$  versus time. Your plot should look like a decreasing exponential. Fit your data to find a value for the damping constant,  $\beta$ .

Repeat this process for a higher value of the damping current ( $0.3 \text{ A} < I < 0.6 \text{ A}$ ).

### 7.5.1.3 Nearly Critically and Critically Damped

Increase the damping current until the system only completes one oscillation after you let it go from its furthest rotation point, so the pendulum only crosses 0 once and then approaches 0 from the negative side. Find the oscillation time for this case by taking several measurements and taking the average.

Then increase the current until the pendulum approaches 0 from the positive side, but never crosses 0. This is the critically damped case. Use several measurements for the time it takes the pendulum to reach the equilibrium in this case.

Now use the critically damped case to get an estimate of the damping constant,  $\beta$ , in this case. Find the damping constant from equation 7.5 by measuring the time that it takes the pendulum to reach some fixed  $\theta$ , say  $\theta_0/10$ , after releasing it from its furthest rotation point. Note that in this case you can assume  $B = 0$  and that  $A = \theta(t = 0)$  in equation 7.5. Since  $\omega_0 = \beta$  in the critically damped case, you can use this  $\beta$  to get estimates of the damping coefficient,  $b$ , and the restoring torque,  $c$ . Recall that  $J = 3.0 \pm 0.1 \text{ kg} \cdot \text{m}^2$ .

Now put the current at a higher value (but remember to keep it under 2.0 A). This is an overdamped case. Find the oscillation time in this case.

## 7.5.2 Forced Oscillations

First, setup the torsion pendulum apparatus with the forcing motor turned on and play with it to get an idea of how it works [*Leybold Scientific*, 2006b]. Note that you may have to give the pendulum an initial displacement to get it moving, but that initial motion will damp out, leaving only the forced oscillations.

### 7.5.2.1 Resonance Curve

Find the resonance frequency of the torsion pendulum from a amplitude ( $\theta_{max}$ ) versus driving frequency plot for the torsion pendulum. In this section, you will need to decide on a procedure yourself, based on what you know about the device and resonance curves. While you are doing taking data, be sure to note the phase behavior of the driver and the oscillator before, at, and past resonance. You should find resonance curves and frequencies for three different brake (damping) currents ( $\sim 0 \text{ A}$ ,  $\sim 0.4 \text{ A}$ , and  $0.8 \text{ A}$ ). Also, find the damping constant for those three cases.

## 7.6 Conclusions

1. Comment on how well the WAPP resonance curve mode works.
2. Are the damping constants in Section 7.5.1.2 consistent with what you would expect? If not, attempt to explain why not.
3. How do the three average oscillation times found in Section 7.5.1.3 compare? What does this tell you about the critically damped case?
4. In Section 7.5.2.1, how did the phase difference between driver and the oscillator vary with frequency? What was the phase at low frequency? At high frequency? Near resonance?
5. Considering the damping currents used, are the damping constants found in Sections 7.5.1.3, 7.5.1.2 and 7.5.2.1, consistent with each other? If not, attempt to explain why not.

## 7.7 Bibliography

Leybold Scientific, *Free Rotational Oscillations*, Leybold Scientific, [http://www.leybold-didactic.de/literatur/hb/e/p1/p1531\\_e.pdf](http://www.leybold-didactic.de/literatur/hb/e/p1/p1531_e.pdf), 2006a.

Leybold Scientific, *Forced Rotational Oscillations*, Leybold Scientific, [http://www.leybold-didactic.de/literatur/hb/e/p1/p1532\\_e.pdf](http://www.leybold-didactic.de/literatur/hb/e/p1/p1532_e.pdf), 2006b.

Thornton, S. T., and J. B. Marion, *Classical Dynamics of Particles and Systems*, fifth ed., Brooks/Cole — Thomson Learning, Belmont, California, 2004.



# Formal Lab Report

For this class, your formal presentation will be a lab report. We will be basing the for of your report on the standards of the Journal of Undergraduate Research in Physics — <https://www.spsnational.org/sites/default/files/preparingamanuscript.pdf>. Note, though, that there will be some changes to those standards which will be discussed in class. For example, you should include a Discussion section near the end of your report.

## PREPARING A MANUSCRIPT FOR PUBLICATION

Rexford E. Adelberger, Editor

Perhaps the most important thing for you to keep in mind when you write a manuscript which you intend to submit for publication to the Journal of Undergraduate Research in Physics is that the audience that will be reading the paper is junior or senior physics majors. They are knowledgeable about physics, but unlike you, they have not spent as much time trying to understand the specific work which is being reported in your paper. They also can read English well, and expect the paper to be written by a colleague, not a robot or an 'all-knowing' computer. There is a big difference between the comments you write in the margin of your lab notebook or what you might write in a technical brief and what you should present in a paper for publication in a scientific journal.

There is a significant difference between a Journal article and keeping a journal. Your laboratory data book should be the journal of what you did. It contains all the data, what you did (even if it was an attempt that turned out to be wrong), as well as comments as to what you were thinking at that time. The Journal article is an discussion of how you would do the research without excursions along blind alleys and hours spent collecting data that were not consistent. The reader does not have to be able to completely reproduce the work from the Journal article. The reader should be able to understand the physics and techniques of what was done.

How a person uses Journal articles to find out about new ideas in physics is often done in the following way. A computerized search, using key words in abstracts, is performed to find what work others have done in the area of interest. If the abstract seems to be about the question of interest, the body of the paper is tracked down and read. If the reader then wants to find out the finer details of how to reproduce the experiment or the derivation of some equation, the author of the paper is contacted for a personal in-depth conversation about the more subtle details.

The general style of writing that should be followed when preparing a manuscript for publication in the Journal is different from what you would submit to your English literature professor as a critique of some other work. The narrative of the paper is intended to do three things: 1) present the background necessary for the reader to appreciate and understand the physics being reported in the paper; 2) discuss the details of what you did and the implications of your work; 3) lead the reader through the work in such a way that they must come to the same concluding points that you did. When finished with your paper, the reader should not have to go back and try to decide for themselves what you did. Your narrative should lead them through your work in an unambiguous manner, telling them what to see and understand in what you did. The interpretation of the data or calculations should be done by the writer, not the reader. The interpretation of your results is the most important part of the paper.

You should take care to make sure that the material is presented in a concise logical way. You should make sure that your sentences do not have too many dependent clauses. Overly complicated sentences make the logic of an argument difficult to follow. You should choose a paragraph structure that focuses the attention of the reader on the development of the ideas.

A format which often achieves these aims is suggested below:

**ABSTRACT** : An abstract is a self contained paragraph that

concisely explains what you did and presents any interesting results you found. The abstract is often published separately from the body of the paper, so you cannot assume that the reader of the abstract also has a copy of the rest of the paper. You cannot refer to figures or data that are presented in the body of the paper. Abstracts are used in computerized literature searches, so all key words that describe the paper should be included in the abstract.

**INTRODUCTION**: This is the section that sets the background for the important part of the paper. It is not just an abbreviated review of what you are going to discuss in detail later. This section of the narrative should present the necessary theoretical and experimental background such that a knowledgeable colleague, who might not be expert in the field, will be able to understand the data presentation and discussion. If you are going to use a particular theoretical model to extract some formation from your data, this model should be discussed in the introduction.

Where appropriate, factual information should be referenced using end-notes. When presenting background information, you can guide the reader to a detailed description of a particular item with the statement such as: "*A more detailed discussion of laminar flow can be found elsewhere 1*". If you know where there is a good discussion of some item, you don't have to repeat it, just guide the reader to the piece.

How one proceeds from this point depends upon whether the paper is about a theoretical study or is a report on an experiment. I will first suggest a format for papers about experimental investigations and then one that describes a theoretical derivation.

### *Experimental Investigations*

**THE EXPERIMENT**: This section guides the reader through the techniques and apparatus used to generate the data. Schematic diagrams of equipment and circuits are often easier to understand than prose descriptions. A statement such as "*A diagram of the circuit used to measure the stopping potential is shown in Figure 6*" is better than a long elegant set of words. It is not necessary to describe in words what is shown in a diagram unless you feel that there is a very special part which should be pointed out to the reader. If special experimental techniques were developed as part of this work, they should be discussed here. You should separate the discussion of the equipment used to measure something from your results. This section should not include data presentations or discussions of error analysis.

### **DATA PRESENTATION AND INTERPRETATION OF RESULTS**

This is the most important section of the paper. The data are the truths of your work. This section should lead the reader through the data and how errors were measured or assigned. The numerical data values are presented in tables and figures, each with its own number and caption, e.g., "*The results of the conductivity measurements are shown in Table 3*". It is difficult to follow narratives where the numerical results are included as part of the narrative. Raw, unanalyzed data should not be presented in the paper. All figures and tables should be referred to by their number. Any figure or table that is not discussed in the narrative should be eliminated. Items which are not discussed have no place in a paper.

### *A Theoretical Study*

**THE MODEL**: This part should consist of a theoretical development of the constructs used to model the physical system

under investigation. Formulae should be on separate lines and numbered consecutively. The letters or symbols used in the equations should be identified in the narrative, e.g.. *The potential can be approximated as:*

$$W \approx Z - \sigma(\rho) , \quad (1)$$

where  $Z$  is the number of protons and  $\sigma$  is the screening constant that is dependent on the charge density,  $\rho$ , of the inner electrons of the K and L shells. If you wish to use this formula at a later time in the narrative, you refer to it by its number, e.g.. "The straight line fit shown in Figure 3 means that we can use Equation 1 to extract a value of..."

**CALCULATIONS:** This section presents a summary and discussion of the numerical results calculated from the model. The results should be presented in tables or graphs, each with a caption. A table or graph that is not discussed in the narrative should be eliminated. Data that are not interpreted by the writer have no place in a paper. One should reference numerical results that are used in the calculations and come from previous work done by others .

**The following sections pertain to both types of papers.**

**CONCLUSIONS:** It is indeed rare that one can come to clear and meaningful conclusions in one paper. I do not know of many papers where this section should be included.

**REFERENCES:** All references, numbered in order from beginning to end of the paper, are collected together at the end of the paper. You should be aware of the following format:

*If the reference is a text-*

1. A.J. Smith and Q.C.S. Smythe, Electromagnetic Theory, Addison Wesley, New York, (1962), p. 168.

*If the reference is a journal-*

2. J. Boswain, Journal of Results, 92, (1968), pp. 122-127.

*If the reference is unpublished-*

- 3) R.J. Ralson, private communication.

**ACKNOWLEDGMENTS:** This short section should acknowledge the help received (that is not referenced in the previous section) from others. This is where you would give credit to a lab partner or someone in the machine shop who helped you build a piece of equipment.

#### OTHER ADVICE

**TABLES AND FIGURES** are placed by the layout editors at the corners of the page to make the format attractive and easy to read. Often a figure is not on the same page as the discussion of

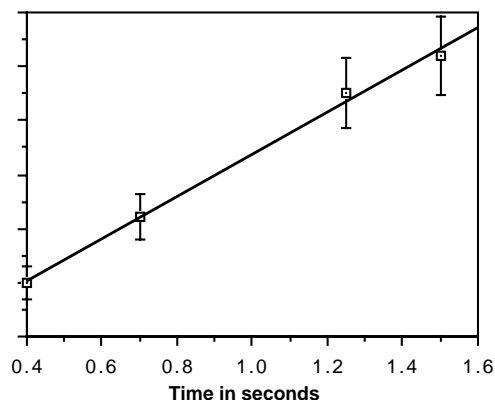


Figure 1

A graph of the measured thrust of a D-2 model rocket engine as a function of time. The line drawn is the least squares fit straight line to the data.

State	Experimental eV	Theoretical eV
3S	5.15±.01	5.13
4S	1.89±.02	1.93
3P	2.96±.02	3.02

Table 1

Energy states found in the numerical search. The accepted values for these states are also listed.

the figure. Each table or figure should be numbered and have a caption which explains the figure. Readers scan papers by looking at the figures and data tables before they read the narrative of the work. Take care to put enough information in the caption of a figure or table so that the reader can get some feeling for the meaning of the data presentation. All lines shown on graphs should be identified, e.g.. "The dashed line is drawn to guide the eye" or "The solid line is a fit to the data using the Ising model"

An example of a graph of a set of data is shown in Figure 1. The graph is sized by the range of data points. The bottom left point does not have to be the point (0,0). Error bars are shown with the data points. A graph with all the data points clustered in one small corner and lots of white space does not help the reader get a feeling of the dependence of your data. Be careful that the figures you present are not too busy; too much information on a figure makes it difficult to pick out the important parts.

**NUMBERS AND UNITS** Any experimentally measured data presented in tables (such as shown in Table 1), should include an uncertainty. You should use scientific notation when presenting numbers,  $(7.34 \pm .03) \times 10^7$  eV. Take care that you have the correct number of significant digits in your results; just because the computer prints out 6 digits does not mean that they are significant. You should use the MKS system of units.

**STYLE** It is often helpful to make a flow chart of your paper before you write it. In this way, you can be sure that the logical development of your presentation does not resemble two octopuses fighting, but that it is linear.

One generally writes the report in the past tense. You already did the experiment. You also should use the third person neuter case. Even though you might have done the work by yourself, you use "we". e.g.. "We calculated the transition probability for..." It is often confusing when you begin sentences with conjunctions. Make sure that each sentence is a clear positive statement rather than an apology.

There are a few words or phrases you should be careful of using. **Fact** - this is a legal word. I am not sure what it means in physics. **Proof or prove** - These words are meaningful in mathematics, but you can't prove something in physics, especially experimental physics. **The purpose of this experiment is...** Often it is necessary to do the experiment to complete the requirements for your degree. You do not need to discuss the purposes of the experiment. **One can easily show that...** - Don't try to intimidate the reader. What if the reader finds it difficult to show? Remember that the reader of your paper is a senior in college! **It is obvious that... or One clearly can see....** - Such statements only intimidate the reader that does not find your work trivial. What is obvious to someone who has spent a lot of time thinking about it may not be obvious to the reader of your paper. **Data** is the plural form of the noun datum. "The data are ..." or "The data show that ...."

